

ALLT-YR-YN

DIRECTORY



ISSUE 71
SEPTEMBER/
OCTOBER 2019



SW DIRECTORIES

Welcome!

Hope you all had a wonderful summer and are looking forward to Autumn and the usual seasonal activities ahead.

We are a small independent business and our aim is to provide an informative and interesting magazine that positively contributes to both community life and local businesses. A full list of local events, activities, groups and churches are available on our website, www.swdirectories.com

Please don't forget to get in touch soon if you would like to advertise your business in our November/December edition. This will be our Christmas edition so may be an excellent opportunity to promote your business to lots of potential customers at this time of year. We deliver to 30000 homes all over Newport; this is an ideal way for you to reach prospective customers and support the local community at the same time. Advertising in the Directories has proved successful for so many of our advertisers, some have been with us since the very first magazine in May 2006.

A huge thank you to all our advertisers - we are grateful for all your support.

Our thanks to Neil Lewis for the front cover photograph

Best wishes

Susan
x

Advertising enquiries:

Telephone Leslie on 07725 888070 or 01633 892771

or email contact@swdirectories.co.uk

COPY DEADLINE FOR THE NOV/DEC EDITION - MONDAY 30th SEPTEMBER

Editor: Susan Woolford

Sales & Distribution: Leslie Woolford

The editor cannot accept any liability to any party for loss or damage caused by errors or omissions.

All artwork is accepted on the strict condition that permission has been given for use in the publication.

SW Directories does not officially endorse any advertising material included within this publication.

All rights reserved. No part of this publication may be reproduced without the prior permission of the editor.



PETER LOWE

BUILDING SERVICES

DOMESTIC AND COMMERCIAL



ELECTRICAL

Efficient, Reliable,
Exceptional Service,
Local Tradesman.

From a complete
rewire to just fitting a
light up we do it all
including
certificates.

**FREE
ESTIMATES**

- New Fuse boxes
- Complete Rewires
- All lighting
- Small and big jobs
- Inspection Certificates
- Extra Sockets
- Electric Showers

Please take a look at my website
www.peterlowebuildingservices.co.uk

Contact Peter 07920762843
Email peteressw@aol.com

Peter Lowe Building Services is a Part P Approved Contractor.

ELECSA

Government Approved Registration Scheme for Electrical Installers



Chillies
Indian Takeaway

12 Risca Road, Newport NP20 4JW
www.chillies-newport.co.uk

Open 5pm-late
7 days a week

Free Home Delivery
on orders over £15
within a 4 mile radius

Pay cash and receive a
10% discount on
collection of orders
over £15
(Excludes any drinks)

**Awarded a Five
Star Food
Hygiene Rating
for the last
three years.**



01633 255 698
01633 212 456

VISA **MasterCard** **VISA**

All major credit cards accepted.
No cheques

RUNNING OUT OF SPACE?

We have the answer at **The Storage Centre Risca**

**Personal and Business
Storage**

**Store Furniture, Stock or
Documents**

Packing materials available

Easy access to your items



Call us for a FREE Quotation on 01633 615600
RBF Business Centre, Risca, Newport, NP11 6NP

Which?
Trusted trader

A2B AUDIO VISUAL

LOCAL, RELIABLE & FRIENDLY

- FREEVIEW, FREESAT & SKY
- AERIALS & SATELLITES
- NETWORKING & WI-FI
- SURROUND SOUND
- TV INSTALLATIONS
- TV WALL MOUNTING
- HIDDEN CABLES
- CCTV SYSTEMS

digital 
Approved Member



**BESPOKE AUDIO-VISUAL SOLUTIONS
FOR EVERY BUDGET**

CALL US ON 01633 560131

WWW.A2BAUDIOVISUAL.CO.UK

G R JOINERS

**ALL ASPECTS OF CARPENTRY WORK
UNDERTAKEN**

- UPVC Specialists
- Doors/Windows/Soffit & Fascia
- Boards/Guttering
- Fitted Kitchens & Bathrooms
- Laminate Flooring/Skirting Boards
- Door Locks Supplied & Fitted
- Garage Doors
- Flat Pack Furniture Assembly
- Decking/Fencing
- Floor And Wall Tiling



**ALL WORK
GUARANTEED**

**OVER 20 YEARS'
EXPERIENCE**

**LOCAL RELIABLE
SERVICE**

**QUALITY
WORKMANSHIP**

For Free Estimates And Helpful, Friendly Advice Call Glenn

Call 07775 811523 or 01633 376412

 www.facebook.com/GRJoiners

58 Herbert Avenue, Risca, Newport, NP11 6JT

R Howells

Plumbing & Heating Services
Email: ryanplumbandheat@gmail.com
www.rhowellsplumbingandheating.co.uk

Call Ryan on 07789 996779
for a free friendly quote



**No Job
Too
Small!**

- Central Heating Systems
- New Boiler Installations
- Boiler Repairs, Servicing & Power Flushing
- Landlord's Certificates
- Domestic & Commercial Services
- Bathroom Installation, including Plastering & Tiling
- All Aspects of Plumbing Services
- 24 hour callout, 365 days per year
- Local & Reliable Service
- Over 15 Years Experience

FULLY INSURED



**NO CHOKE CHAINS OR
RATTLE BOTTLES JUST KIND
EFFECTIVE METHODS!**

- **Puppy Classes**
- **Adult Dog Training Classes**
- **Weekly Classes**
- **Individual Training Sessions**
- **Over 10 Years' Experience**



Please check the website for all classes.

Call Shaun:
07890 996093
www.k9traintime.co.uk



L J SYMONDS

ROOFING, BUILDING & MAINTENANCE

ROOFING

- Tiling
- Slating
- Fibreglass
- Chimney stack repair
- UPVC Fascias

BUILDING

- New Build
- Extensions
- Renovations
- Garage Conversions

MAINTENANCE

- Gutter repair
- UPVC cleaning
- Roof repair
- Misted glass repair
- House painting



Visit www.ljsymonds.co.uk Email leesymonds@hotmail.co.uk

Tel: 01633 548688 Mob: 07506 292990

Unit 9 Pontymister Industrial Estate, Risca NP11 6NP



Family-run
business

**David James
& Sons**
Est 1988

CARPET, FLOORING & LAMINATE SPECIALISTS

**CALL IN FOR
A BARGAIN**

**CELEBRATING OUR
31ST YEAR
OFFERS ON ALL ROLL
STOCK & REMNANTS
REDUCED TO CLEAR**

**Great deals on
all leading
manufacturers**

**Free planning,
estimate, & home
selection service**

**Moving heavy furniture
& old carpet removal
service available**



VISIT OUR SHOWROOM TODAY

458a – 462 Caerleon Road, Newport NP19 7LW | Tel. 01633 253800
Email: james.carpets@ntlworld | Web: www.davidjamescarpets.co.uk

Molyn Builders

- Extensions, loft conversions and garage conversions
- Full or partial home refurbishment
- Structural opening up work
- Kitchens
- Bathrooms
- All plumbing and electrical work



ALL WORK GUARANTEED

CALL FOR A QUOTATION OR ADVICE

TELEPHONE 01633 250287

www.molyn.co.uk

Email enquiries to info@molyn.co.uk

15 Allt-yr-yn Avenue, Newport NP20 5DA



CRAWFORDS

Carpet and Upholstery
Cleaning Specialist

Which?
Trusted trader

Proud to be
Endorsed

NCCA
NATIONAL CARPET CLEANING ASSOCIATION
NCCA Member 1490

- Stain, Odour & Spot Removal
- Flood Damage/Restoration Work Undertaken
- Upholstery and Leather Suites
- Carpets & Rugs
- Competitive Prices
- 24 Hour Emergency Call Out
- Free Surveys/Estimates
- Full Liability Insurance
- Domestic & Commercial



01633 265458 / 07840 554485

info@crawfordscleaningservices.co.uk
www.crawfordscleaningservices.co.uk

Newport Uskmouth Rotary boost Charity funds to over £180,000

Newport charities and volunteer organisations continue to benefit by thousands of pounds each year by taking part in the annual Newport Uskmouth Rotary's City Draw **and there is an opportunity for new organisations to join the 2020 Draw**. Affectionately known as the **NURD**, the event is genuinely a win/win scheme first introduced in Newport in September 2008. The concept is simple and hugely beneficial. The Club obtains prizes from sponsorship from various commercial and private sources. The Rotary Club prints the raffle tickets, **gives them** to the participating organisations who **keep the income from the sale of tickets**.

On average each year, more than £17,000 has been pumped into the charity sector of the City. The first Draw was in May 2009 and the most recent on 1st May 2019, when the Mayor of Newport drew the winning 11 tickets which were shared by Friends of the Newport Ship, Newport Philharmonic Choir, Newport MIND, Lliswerry Heart Link, Zimbabwe Volunteers Association, Adams Chorale, Cantorion Sanctaid Choir, and ETA-mined. **£20,000 worth of tickets will be available for the next Draw (NURD20) and registration will take place in late October**. Beneficiaries of the Draw say:

RN Association (Newport): "A big thank you for inviting us again to take part in the Annual Draw. They provide everything – all we have to do is sell the

Newport Uskmouth
Rotary
& Satellites



tickets and keep the money and, this year, our funds were swollen by £1,500".

Parkinson's Newport: "We may not have won a prize but it was all in a good cause and we raised £395 for our funds".

"Opt to Adopt" Dogs'

Home: "We really appreciate the opportunity to take part and the funds raised will be put to good use".

NURD19 first prize

Winner: "Winning the top cash prize means that I can afford a holiday for the first time for many years. Thank you Rotary".

The Draw promoter, Keith Minton, says

"This is just part of the contribution Newport Uskmouth

Rotary makes to the City: other activities include the award-winning 'Young Carers' project, developing work in the City's first 'Men's Shed', the annual summer cycle ride for Prostate Cancer and the 'Tree of Light' at Christmas in Friar's Walk.

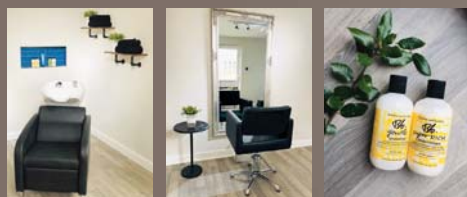


“ The event is genuinely a win/win scheme first introduced in Newport in September 2008. ”

If you are involved in running a charity, a youth activity, keep-fit class, PTA, church, choir etc. etc., you may be eligible to take part in the 2020 Draw. To learn more contact Keith Minton on keithminton44@gmail.com



I am Toni & Guy qualified and have numerous L'Oréal Colour certificates. I offer all aspects of cutting and colouring whilst providing a personal, relaxing experience from my home hair salon based in the Ridgeway area of Allt-yr-yn.



Call me today on 01633 556942 for more information or to make an appointment.

Join me on Facebook! Facebook/HairbyEmma10



Over 50 years experience in Interior Design. We invite you to call into our showroom and chat with us about your furnishing ideas

Our fabric displays are from carefully selected suppliers such as Ashley Wilde, Clarke & Clarke, Belfield, Bill Beaumont to name but a few, all of which offer immense inspiration. From the initial selection of fabric to the final fitting stage, we offer the highest standards and make sure that you will be pleased with your choice.

Love your fabric choices for your made to measure curtains and blinds

MADE BY US IN HOUSE

We love what we do - So will you!



Opening Hours: Monday Closed. Tues, Weds, Thurs 9.30am-5.30pm.
Friday 9.30am-1.00pm. Saturday 10.00am-2.00pm

www.cwmbrancurtainsandblinds.co.uk email: cwmbrancurtainsandblinds@gmail.com

171 Larch Grove, Malpas NP20 6LA

Mob: 07887 677110





Nant Coch Church

Sunday Services at 10.30am and 6.30pm
Toddlers / Youth Clubs / Community Event

68 Fields Park Road, at the corner of Fields Park Avenue

Find out about our services and activities at:

www.nantcoch.org.uk / e-mail info@nantcoch.org.uk

CHOW TAXI MINIBUSES

01633

211-011

DOWNLOAD THE APP



ALL MAJOR CREDIT CARDS ACCEPTED



Fifteen Seconds to Create the Right Impression!

Our experience has shown that most potential buyers will decide whether they have a good feeling about a house within 15 seconds of entering it!

Whilst it would be ridiculous to suggest that this is the major contributing factor as to whether an offer is made or not, we strongly recommend that home owners looking to sell their properties take note and do what they can to present their house in its most favourable light.

We encourage our sellers to look at their own home through the eyes of a potential buyer and ask themselves what would you like to see, how would you like the house to be presented?

Tidy Up Before Viewings

You would be amazed by the number of houses we show people around where the current owners have made no effort to clean the main living spaces. Plates, mugs, clothes, toys etc are left on display instead of being tidied away.

- Keep a few family pictures on display but if possible pack away your knick-knacks, ornaments and other items that some might consider as clutter. Whilst it is still your home, potential buyers want to be able to see themselves living there and constant reminders of you won't help!

- If your kitchen worktop space is limited, make it look as large as possible by putting kettles, toasters, microwaves, storage jars/containers and other items in cupboards.

You might also be interested to know that almost 95% of buyers are looking to buy a house that they can move straight in to. Even though buyers are encouraged to overlook the current furnishings and decoration of a property, ripped or marked wallpaper and stained or worn carpets can turn buyers off.

Some sellers might think that because they are moving they needed invest the time or go to the expense of replacing things like this but we strongly recommend you reconsider because what will cost you a couple of hundred pounds to do might save you thousands when it comes to negotiating the sale price.

Don't Forget Your Garden

Spend a bit of time and money preparing the exterior of your home. Create the right first impression and keep the gardens and driveway well maintained, clean the facias and guttering, paint the front door if necessary and please remove the gnomes from the lawn!

Speak to the Experts

We pride ourselves on our honesty and integrity. If you are unsure what you need to do to show off your house in its best light, ask us.



Book A Free Valuation and Let Us Help You to Sell Your House

If you are thinking of buying, selling, renting or seeking a professional company to manage your properties, get in touch to find out how we CAN help you.

Kingston Newell Estate Agents, 70 Bridge Street, Newport, South Wales NP20 4AQ
Tel: 01633 262628 Email: sales@kingston-newell.com www.kingston-newell.com



The Golden Age of Smuggling

by Paul Minton

I write this article at the height of summer, when the country has recorded its hottest July ever temperature. Welsh beaches have been invaded by throngs (or should that be thongs?) of sun worshippers, whose modesty is protected only by scanty bikinis and budgie smugglers. Of course, budgie smuggling is not the only sort of smuggling that takes place in the UK. Trafficking in both drugs and people is an ever-present blight but old school smuggling of goods is never out of fashion. In 2012, for instance, contraband consisting of 25,000 bottles of red wine, 67,000 cigarettes and 92 kilos of tobacco was recovered from just a single container at Newport Docks.

According to estimates, Britain once had as many as 25,000 smugglers with another 100,000 people actively involved in distribution. The Royal Navy, with its complement of 50,000 sailors, struggled to police national waters and it was only after the conflict with France had ended with the defeat of Napoleon that the war against the smuggler gained traction.

As a major port, Newport has been awash with illicit goods for hundreds of years, depriving HM Customs and Excise and its

predecessors of millions of pounds in lost revenue. The manner in which contraband was brought ashore varied but there have been persistent rumours of secret tunnels running beneath the city, such as between the River Usk and Christchurch and from the River Ebbw to St Woolos Cathedral.

The earliest reports of the illegal trade around Newport possibly date back to 1649 when 2,000 lbs of tobacco were seized at Redwick. Attempts by customs officers to board moored vessels suspected of smuggling were often less than plain sailing. During one such episode in 1791, a ship's crew, brandishing both cutlass and pistol, swore to the official that "if he presumed to come on board, they would blow his brains out!" Many merchant seamen who were found guilty of smuggling were later pressganged into the Royal Navy as a punishment and a deterrent. From 1830, it was generally recognised that smuggling was in decline nationwide, although Newport did not see a similar change in the tide. Instead, it reported increasing numbers of offences and it has been suggested that the opening of the Monmouthshire Brecon Canal may have contributed to the rise. One interesting case involved the inaptly named ship, *Good Intent*.

Owned by a group of Newport businessmen, the 72-ton schooner ran a seemingly respectable operation between Britain and France. However, an inspection in 1837 revealed a series of false bulkheads that concealed 1100 gallons of brandy in 259 kegs. As a result, the *Good Intent*'s master was sentenced to a stint in Monmouth Gaol, whilst the vessel itself was confiscated and broken up.

On another occasion in 1891, the *South Wales Echo* reported that the master of a German ship named the *Leocadia* had been summoned to Newport Town Hall following the discovery of undeclared brandy stowed beneath some canvas in his bath. The steward had claimed the barrel was empty but the truth was revealed when customs officers heard the liquid sloshing about inside. That same year, the *Western Mail* printed a story about a runner for a Newport butchers, who was charged with smuggling cigars. Upon being confronted when bringing them ashore, the man literally did a runner, although he was apprehended some two hours later. The sentence was one month's imprisonment with a two guinea fine and no doubt, his dreams of becoming a big time smuggler went up in smoke at the same time!

UP TO 50% LESS THAN A NEW FULLY FITTED KITCHEN

by simply replacing the doors and worktops

Est. 1999

From the UK's #1
kitchen makeover experts.
Visit our showroom now

Before



- FROM SIMPLE DOOR REPLACEMENTS TO COMPLETE FITTED KITCHENS
- FULLY INSTALLED BY LOCAL PROFESSIONALS IN JUST A FEW DAYS
- CHOOSE FROM A LARGE SELECTION OF DOORS, WORKTOPS AND APPLIANCES
- 84 SHOWROOMS NATIONWIDE

9.7/10  Trusted member of
Where reputation matters

See what our customers have to say



CALL US NOW FOR A FREE ESTIMATE:

01633 526077



VISIT OUR SHOWROOM:

163 Caerleon Road,
Newport, NP19 7FX

DREAM DOORS®

NEW LIFE FOR OLD KITCHENS

www.dreamdoors.co.uk

DYER ELECTRICAL LIMITED

LOCAL, DOMESTIC ELECTRICAL SERVICES

Kitchen and bathrooms, Re-wires, sockets, lighting, outdoor lighting and power, CCTV and alarm systems, heating systems and fault finding.



**ALL WORK TESTED AND CERTIFIED BY
TRUSTED, RELIABLE TRADESMAN.**



Contact Kevin for a free quotation or survey on

M: 07980 089974

E: kevindyer2002@hotmail.com

Reservoirs in Wales

The Garreg Ddu Dam

Although looking like a viaduct, it is actually a submerged dam. Its role is to maintain a sufficient level in the Garreg-ddu reservoir so water can enter the Foel Tower and the gravity-driven aqueduct to the Frankley Reservoir in Birmingham. The dam is only required to operate during times of extreme drought.

The water flows to the Severn Trent water treatment works, where it is cleaned by rapid gravity filter sand beds.

Chlorine, fluoride and lime are added. The Foel Tower stands 52m above the Frankley Reservoir in Birmingham. The gradient of the aqueduct which links them averages 1 in 2,300,



which allows the water to flow by gravity alone.

It also supports masonry pillars carrying the access roadway to the neighbouring valley of the River Claerwen which were

clearly visible on our trip in September 2010 but when we visited the dam in February of 2014 it was full. Well worth a trip and only 1 ½ hours from Newport.

M.R.M Plumbing and Heating



FREE QUOTES
24/7 CALLOUT
COMPETITIVE PRICES



Mobile: 07864 029690
email: martin2979@virginmedia.com

ROGERSTONE

Landscaping & Driveways Ltd

**Driveway, Landscaping and
Building Specialist**
All Aspects of Work Undertaken



**Don't Delay CALL today for a
Free quotation**

Tel: 01633 449836
Mob: 07765 240400

Email: Rogerstone.1d@hotmail.com

Web: rogerstonelandscapingdriveways.co.uk

AWARD
WINNING
GARDENS



JAPONICA

LANDSCAPE CONSTRUCTION AND MAINTENANCE



Domestic & Commercial
**Fully Qualified with over
22 years' experience**

Fully Insured and Local
Authority Approved

Professional & Reliable

Competitive Rates &
Friendly Staff

Artificial grass • Turfing • Paving • Decking • Fencing • Driveways
Patios • Block paving • Tree work • Hedge cutting • Grass cutting
Pressure washing • Planting • Tidy ups • Invasive weed control



We cover South Wales & West England.
Whether it's a one off visit or something
regular you're looking for

**Now proud members of the
Marshall's register**



01633 376226 Info@japonica.co.uk **07730 592009**



Follow us for News and Offers



www.japonica.co.uk

Dreaming of escaping a working life for retirement?

Getting your date right will help your plans stay on target

Some people will have set their retirement date when they were in their 20s or 30s, and a great deal will have changed since then, including their State Pension age and perhaps their career plans.

It may seem like a finger-in-the-air guess when you're younger, but the date that you set for retirement on a pension plan does matter. It will often dictate how your money is being invested and the communications you receive as you get nearer to that date.

MATCHING HOPES FOR THE FUTURE

But according to new research, most over-45s are not making plans to match their hopes for the future. The vast majority (86%) of those aged 45 or over are already dreaming about escaping their working life for retirement, but only 8% of the same age group have recently checked the retirement date on their pension plans to make sure it is still in line with their plans. Over half (56%) don't have a clear idea when they want to retire, and only one in ten (10%) have worked out how much income they'll need when they decide to stop working. The study reveals it doesn't get much clearer as you go up the generations: less than a fifth (17%) of those aged between 55 and 64 have recently checked to see if the retirement date on their pension policy is still fitting in with their plans.

FOUR REASONS TO KEEP YOUR RETIREMENT PLANS UP TO DATE

1. Right support, right time: if the date you plan to retire changes, or you simply want to take some of your pension without stopping working, it's important to tell your pension company. Otherwise you may not receive information and support about your pending retirement at the most helpful times, as they'll be basing this on your out-of-date plans.
2. De-risking investments: some investment options will start to move your pension savings into lower-risk investments as you get closer to retirement. If you don't have the right retirement date on your plan, you could be moving into these investments at the wrong time. For example, if you move into them too early, you could potentially miss out on investment returns which could increase the value of your pension savings. But if you move too late, you could be exposing your life savings to unnecessary risk.



3. Investment pot: the size of pension pot you need to build up to maintain your lifestyle when you come to retire will depend on when you plan to do so.

4. Income: if you're planning to buy an annuity at retirement, which will guarantee you an income for the rest of your life, the amount of income you'll get will depend on the size of your pot and annuity rates at that time. If you prefer to use your pension savings more flexibly, you can keep your money invested and take it as and when you need. You're then responsible for making sure your life savings last as long as you need them to.

WORKING LONGER, OR RETIRING EARLIER

Reviewing your retirement date regularly as you get older makes real sense, and most modern pension plans enable you to change and update this date whenever you choose. It needn't be the same as your State Pension age – you might want to work longer, or retire earlier. Some people who plan to slow down or stop work earlier are using money from their private pension savings to bridge the gap until they can start claiming State Pension. All you need to do is inform your pension company of your plans, even if they change again in future.

RETIREMENT IS YOUR TIME

We will provide you with both guidance and advice around your retirement options. If you are looking to access your pension we can help.

Contact us today on 01633 840000 to arrange your FREE Pension Review and discover how the award-winning Kymin Wealth Programme can secure your financial freedom in retirement.

Find us on:



Will you be Financially Secure in Retirement?

Looking forward to your retirement is an exciting time, but planning for it can be a complex and overwhelming experience.

- Are you sure your current pension is going to provide the freedom you deserve?
- Do you understand how your current pension performs and how it will impact your lifestyle in retirement?
- Are you overwhelmed and struggle with the complexities of the pension planning process?

If you struggled to answer any of these questions, then perhaps its time for a fresh perspective.

Contact us today on **01633 840000** to arrange your **Free Pension Review** where you will discover how the **Award Winning Kymin Wealth Programme** can secure your financial freedom in retirement.

w: www.kymin.co.uk **e:** info@kymin.co.uk **t:** @kymin

Kymin House, 35 Bridge Street, Newport, South Wales. NP20 4BH

Kymin Financial Services Ltd is Authorised and Regulated by the Financial Conduct Authority, Firm Ref No. 189815

Professional Adviser

BEST FINANCIAL
ADVISERS TO
WORK FOR 2019





Wade and Wade LLP are a family run legal practice offering a friendly and cost competitive legal service in areas such as:

- The buying and selling of your home (conveyancing)
- Wills and Probate
- Lasting Powers of Attorney

We will take time to talk things through with you to understand your needs to enable our experienced team to offer no nonsense, practical advice.

We offer transparency in relation to our costs so you will always know what to budget.

Let our family take care of your family.



126 Caerleon Road Newport NP19 7GS
info@wadeandwadellp.co.uk | www.wadeandwadellp.co.uk
01633 386026



DISTINCT KITCHENS



FULL DESIGN & INSTALLATION SERVICE

www.distinctkitchens.co.uk



TRADITIONAL

Classic look and feel with the added benefit of modern functionality.



MODERN

Clever design to create an impressive space to cook, eat and entertain.



BESPOKE

Bespoke hand-made kitchens are exquisitely designed and made with the finest materials.

☎ 01633 619 999 ✉ info@distinctkitchens.co.uk

📍 www.distinctkitchens.co.uk 📍 Unit 17, Pontymister Industrial Estate, Risca, NP11 6NP



Dying to Get Up Twmbarlwm

Photo: Terry C. Evans



Photo: Ann Woosnam

I know this is going to be a sensitive subject and many out there will castigate me for these views – but ask yourself, would your dearly departed really want his or her favourite location treated in this way?

I am, of course, talking about the increasingly common practice of displaying floral tributes and other memorabilia in public places. You see a lot of this on local beauty spots and Twmbarlwm is no exception.

I have no problem at all with the occasional bunch of flowers which are going to rot down to nothing – but when it's a six foot long wreath spelling out "Grandad" I start to question the sentiment.

Some of these wreaths are works of art and one has to admire the skills of the florist who created them and when they are displayed on that emotion-sapping day of the dearly departed's funeral they look splendid atop the casket – there's no finer indication of the family's love for their beloved relation.

Later, the family decide they need to mark the loss of their loved one in one last commemoration by displaying the wonderful, expensive, floral tributes in the place he/she loved the most. Never mind that it's everybody else's favourite place too. But that doesn't matter because the flowers will rot away naturally and be returned to the earth's bounty in the same symbolic way of the one who is now pushing up the daisies.

But wait a minute – how has the talented florist managed to sculpt the flowers into a meaningful symbol of the expired person's life? As one who has cleared away much of this type of detritus I can tell you – there is half a mile of 16 gauge wire, several kilos of phenolic foam, a ton of plastic and enough polyester ribbon to encircle around the world – none of which is going to melt into the environment any time soon.

Bearing that in mind, I believe that if the site of the tribute was truly the favourite spot of the one who is now at peace, I strongly suspect he/she is considering moving on to a less cluttered location to spend eternity.

As if the floral tributes weren't enough to irk my

After only two weeks the beautiful floral tributes are reduced to just so much plastic, ribbon and metal.

ire, don't get me started on balloons, inflated with hydrogen and released in their hundreds to interfere with air-traffic control and land miles away across the country where they can be potentially gobbled up by all sorts of wildlife and farm animals.

To top it all, the distribution of such tributes is often preceded by the bizarre practice of scattering poor old Grandma or Grandad to the four winds.

Now I must admit, I don't object to that too much – indeed, I also intend having the lead role in such a ceremony one day (in the distant future). Hopefully, those that I leave behind to perform the ceremony will have the sense not to leave me in an untidy pile where visitors to the site are going to want to sit with their egg sandwiches and thermos of tea. I also hope that they check the direction of the wind – I don't fancy being inhaled by my grieving family or faithful hound.

Although this article takes a light hearted view at this subject there is a real message – the passing of somebody close to you is a traumatic, personal time and we in the Twmbarlwm Society who tend the landscape for the sake of the community do not want to impinge on anyone's time of grief. However, please do not be offended when your well-meant tributes are removed after a suitable period – or why not retrieve them yourself before they're past their best?

Terry C. Evans, Chairman CTS

CTS meet at the car park below Twmbarlwm's summit for a litter pick and volunteer workday on the last Sunday of every month to which everyone is invited, it's not all hard work and it's a great opportunity to find your way around up there. We organise walks and other events up the mountain and at Crosskeys RFC throughout the year so watch our website and Facebook page for details.

www.twmbarlwm.co.uk

IRONING SERVICE



Local, reliable and friendly.

Flexible service to meet your requirements.

Smoke free, clean working area.

Collection and delivery.

COMPETITIVE RATES

PLEASE CALL SALLY ON
07740 096099



- Painting & Decorating
- Wallpaper Hanging
 - Coving
- Floor & Wall Tiling
- UPVC - Soffit & Fascia Boards/Guttering
- Laminate Flooring/Skirting Boards
- Decking/Fencing/Patios

Local Reliable Service
Free Estimates and Advice

Call Wayne

H: 01633 891970

M: 07760 357141



Devine Curtains & Blinds

Based at George St Furnishers, Newport with a wide selection of fabrics on show

Home Consultation Service Available
20 years' experience.

Large selection of fabrics available or you are welcome to provide your own fabric
Curtain fitting service available

• Curtains • Valances • Tie Backs • Swags & Tails
• Roman Blinds • Vertical Blinds • Roller Blinds
• Venetian Blinds • Conservatory Blinds

We have the largest selection in Newport of made-to-measure fabrics

SPECIAL OFFER

FREE LINING ON CURTAINS ORDERED OR
15% OFF BLINDS WITH THIS ADVERT

Opening Hours

Mon, Weds & Fri 11am-3pm. Sat 10.30am-3pm



All consultations are free of charge

Call Elizabeth Eatherington: 01633 896867 07707 606043 www.devinecurtains.co.uk

Bluebird Care

Providing Support When You Need It



We provide high quality care and support services throughout Newport & South Monmouthshire, enabling our customers to retain their independence whilst living in the comfort of their own homes.

Why choose Bluebird Care

It might be the first time that you have had to consider care for yourself or a member of your family; or perhaps you are looking for some extra support to complement the care you already receive. Whatever your situation, deciding on a suitable care company can be a stressful and difficult task, filled with uncertainty and pressure to make the right choice.

Unlike other companies, we do not take a 'one size fits all' approach to providing care. Instead, we are passionate about delivering a personalised service designed around the needs of each individual customer to support their lifestyle.

Our staff

We recruit and train all of our own staff to the highest standards to ensure we provide the quality of care that we would want for our own family and friends.

Connect with us on Facebook  **Bluebird Care Newport & South Monmouthshire**
Follow us on Twitter  **@BluebirdNewport**

Our Services

You might be looking for short-term help and support after a stay in hospital, or whilst recovering from an illness. Or perhaps you need care and support for the long term. It might be respite that you need whilst your usual carer takes a break, or maybe you need someone to take care of a family member whilst you're away. Whatever your needs, Bluebird Care can help.

From 30-minute visits aimed at helping with household tasks or preparing a meal; to caring for those living with dementia – Bluebird Care provides you with the support you need, when you need it most.

Some of the tasks that our Home Care Assistants frequently undertake include:

- Full personal care including showering and bathing
- Mobility assistance, including the use of hoists and other equipment
- Assisting with medication
- Assisting with managing the home, e.g. cooking, cleaning, laundry
- Help with shopping and meeting friends
- Providing support and assistance to customers attending GP/hospital/dental appointments

A realistic and affordable alternative to Residential Care

We also provide 24 hour Care

Our dedicated live-in carers provide personal assistance from waking until bedtime and are on hand if they are required during the night.

Should you need care and support around the clock, we will put together a small team to provide care on an hourly basis, day and night, for total peace of mind.



Call and speak to a member of our team to find out how Bluebird Care can help you and your family.

NEWPORT INDOOR BOWLING CENTRE

The Glebelands Bank Street Newport NP19 7HF

www.newportibc.co.uk



OUR AIM IS TO FOSTER THE GAME OF INDOOR BOWLS AND TO CREATE AND MAINTAIN A CENTRE OF EXCELLENCE

- New members Male/Female/Any age most welcome
- We also have disabled facilities
- Why not join one of our leagues
- Interested in playing competitive matches
- Coaching Sessions for all ages & standards
Sunday 10am - 12pm
1st sessions is free

**ALL FUNCTIONS
CATERED FOR
INCLUDING
CORPORATE
EVENTS**

For further information please contact the Centre

Tel: 01633 264343

JOIN US ON
facebook

GATERS



07585 558051 Barbershop

54, TREDEGAR STREET, RISCA, NP11 6BW



Gaters Barbershop has moved to new premises



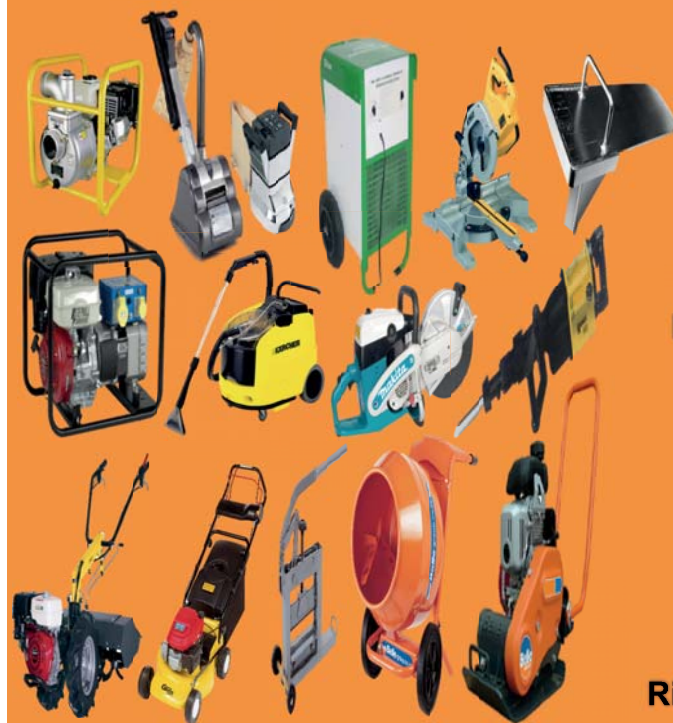
Gaters Barbers are pleased to welcome you to our new barbershop which opened on Monday 21st March At 54 Tredegar street Risca NP11 6BW only about 80 yards from our old shop but this one offers you more luxury with a dedicated seating / waiting area which has TV and FREE WI FI so you can connect with your phones , check in and if you have kids they can play on their ipads to keep them entertained also. We look forward to seeing our old customers and look forward to seeing new ones too.

www.gatersbarbers.com

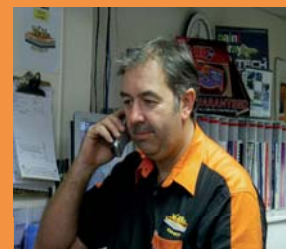


WH TOOL HIRE RISCA 01633 619129

WH
TOOLHIRE



Ring MARK GATER



Ring NICK FORBES


**UNITS 1 - 4 PARK ROAD IND ESTATE PARK ROAD RISCA
NP11 6PU**

WH TOOL HIRE RISCA 01633 619129

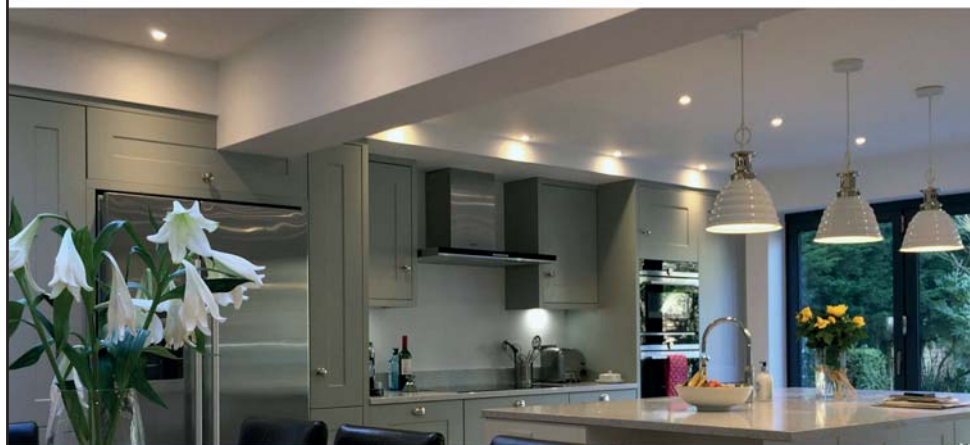


15% HIRE DISCOUNT

GET YOUR
DISCOUNT VOUCHER

Apply for it 

www.whtoolhire.com



Full & Partial
Rewires



Landlord
Certificates



Security
Alarm Systems



PAT Testing
Services



Fuse Board
Changes



New Build
Installations

NIC EIC Insurance Services
approved electrical contractors

find us at

 www.darkelectrical.com
 07896 279 331

"No Job is Too Big, No Job is Too Small"
We are equally adept working for
commercial, industrial and domestic
customers.

Review us on



 07896 279 331  info@darkelectrical.com
 14 Priory Way, Langstone, Newport, NP18 2JE

follow us at



Leaky Shower???

We have a Shower Pod Solution



**SALE
NOW
ON**

Are you fed up with your leaking shower area?

Install a leak free replacement from Newport Bathroom Centre.
We have a special offer for a 900mm Quad 2 door shower door, with a thermo shower mixer and leak free shower pod.

Supplied and fitted from
£1595.00 inc Vat

(Full terms apply)

- Quick Installation
- Minimum disruption
- Completely leak free construction
- Say goodbye to silicone and grout
- No mould or bacteria
- Easy to clean

We also offer a full design service using the latest 3D Software to visualise designs.
Supply Only OR Supply and Professional Installation.
Tiles, bathrooms, furniture, accessories, showers and much, much more.



Newport Bathroom Centre Ltd

Based @ George Street Furnishers 19-24 George Street, Newport. NP20 1EN

Tel: 01633 26 26 29

info@newportbathroomcentre.com

What's On



See our website for a full list of what's on locally.

www.swdirectories.com

Places of Worship



See our website for a full list of local church services and activities.

www.swdirectories.com

Learn FREE Raja Yoga Meditation
with the Brahma Kumaris Newport
For information please contact Rupdaye:



newport@uk.brahmakumaris.org
07908 221731

COMMUNITY COFFEE SPOT

10.30am - FIRST WEDNESDAY OF THE MONTH

St Anne's Church Hall NP10 9SH

Come and join us for coffee, tea and a chat.
You will be very welcome, so why not pop in?
If you want to find out more,
please call Claire on 01633 895222



Dementia Café

Dementia can strike anyone at any age with any degree of severity, it affects not only those with the illness but also the carers. To help them and give some respite to the carers, St Mary's Church, Malpas has opened a dementia friendly café. It meets every 2nd Monday of the month in the new Cloister Room adjoining the church. Everything is free.

There is free tea, coffee, biscuits, cake, jigsaws, songs, textured cloths, painting, people to listen, people to talk to. The café is open

10am to 12 noon. Come along and spend a while among friends, you will be made more than welcome. There is good

wheelchair access, a disabled toilet and parking is either outside the church in the bay on the main road or in Llanover Close around the corner.

The dates for the rest of the year are – 9th Sept, 14th Oct, 11th Nov & 9th Dec. For more information contact Maggie Thomas 07825 914095

Ridgeway Community Centre Day Tours 2019

**THURSDAY
19th SEPTEMBER**

Porthcawl & Barry

RIDGEWAY HILL
Bus Stop 10:00am
RIVERFRONT 10:05am
£10 per person

**THURSDAY
21st NOVEMBER**
**Victorian Christmas
Market in Gloucester**

RIDGEWAY HILL
Bus Stop 9:15am
RIVERFRONT 9:20am
Return from Market at 5:00pm
£11 per person

To book please ring
Heather on 01633 893730
or

Malcolm on 01633 661906

Payments can be made at
the Ridgeway Community
Centre on Wednesday
between 9.30 - 11am
or Fridays 4.30 - 6pm

Rogerstone Roses WI

Meet on the 2nd and 4th
Tuesday in the month at
7.00pm in

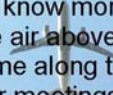
St Anne's Church Hall,
High Cross Lane,
High Cross.

For more details please contact:
Mary Edmunds 01633 891363



Aviation and Air Traffic Control Established 1987

If you are interested in aviation and
would like to know more about what
goes on in the air above us every day,
why not come along to one of our
regular meetings at the
Graig Community Hall, Bassaleg?
For more information call
01633 213243



Newport U3A

Would you like to travel, get creative, play the
Ukulele, join a choir, attend talks and video
shows, get active or learn a new language - all
for pleasure, with NO exams? Well Newport
U3A has over thirty interest groups for the
retired or those winding down to retirement.
We meet at the premises of Shaftesbury Street
Methodist Church, NP20 5JH from 10.00am to
3.45pm Wednesdays, Thursdays and Fridays
during term time, and other days for offsite
activities.



The New Term starts
on Wednesday 4th
September. Come
along and try a few
taster sessions
before committing to
join us. We would
love to see you at
anytime of the year.

For more information about Newport U3A's
many interest groups and events visit
www.newportu3a.org.uk or phone
Angela Robins on 07980 970967.

Keith Price Garages Ltd

VOLVO



New XC40

- Full Dealer facilities
- Full four wheel alignment available
- Factory approved Polestar performance upgrades

**FREE COLLECTION AND DELIVERY
WITH FREE LOAN CAR
(ON REQUEST)**

**12 MONTHS FREE BREAKDOWN COVER WITH
EVERY VOLVO SERVICE**

Keith Price Garages Ltd (Volvo)

Merthyr Road
Abergavenny
Monmouthshire
NP7 5DB

info@keithpricegarages.com
www.keithpricegarages.com



Tel: 01873 857644
Fax: 01873 858767

GRACE BAPTIST ASSEMBLY

gathers for public worship on Sunday afternoons at the
**Malpas Community Centre, Pillmawr Road, Newport, at 3pm and
fourth Sunday mornings of the month at the Libanus Centre,
Libanus Road, Blackwood, at 10.30am**

What do we believe?

We seek to be Word-centred and gospel-driven.

The Word of God is crucial! The ministry of Grace Baptist Assembly will, we trust, always keep God's Word central. Why? The Holy Bible is God's written Word; it is how He has chosen to communicate to us who He is, what He has been doing, and what He expects of us. The Bible alone holds the ultimate, most trustworthy, most authoritative answers to the questions of life and eternity. Thus, rather than magnifying the ideas of mere human beings, we look instead to God, trusting that He inspired and preserved His Word for His glory and our good. We believe that the written Word is a reflection of the Living Word, Jesus Christ, and that its contents are our reliable, sufficient rule of faith and practice. When a moral question is raised, or when we face a difficult circumstance, we choose to resort to the Bible for guidance, correction or comfort, rather than falling back on our own experiences and opinions.

We seek to be traditional in our message.

We hold to historical Baptist distinctives. Specifically, we are fond of The First London Baptist Confession of Faith, 1646 edition. We gladly accept broken, unaccomplished, needy sinners like ourselves; but we are not seeker-driven. We do not believe that 'doing church' is what God requires of people, and we do not believe that it is this or any other local church's responsibility to water down, nor add to, the gospel of Jesus Christ in order to create a more 'comfortable' environment. Do we want that gospel [good news] to be understandable? Yes. Do we ourselves want to be compassionate and inclusive? Yes. We want broken people - people like us - who know their sinfulness. We are here for those who know that they need something more than what this life has to offer. We seek not to offer more of the same, but to offer something different. The person and work of Jesus Christ is enough for us. We invite you to come see why.

We seek to be relevant in our vision.

We maintain that the Bible is more than a collection of ancient writings, but rather, it contains everything we need to face the problems of life in today's culture. Consequently, our teaching and preaching will include practical application to help us live as we ought to live. We are not an elite group of those who have 'arrived' and we are committed to continual change. We rest on and submit to the absolute, unchanging truth of the Bible; and it in turn changes us. We hear and meditate on God's Word - and while we do that, we try to be doers of that Word, and not hearers only. We have found that the unchanging truths of the Bible affect our everyday lives, and we pray that we will become more and more like Jesus Christ as we submit to and obey His Word.

Find us on Facebook 

GRACE BAPTIST ASSEMBLY

gathers for public worship on Sunday afternoons at the **Malpas Community Centre**, Pillmawr Road, at **3 pm**.

Sermon excerpt from: *A KINGDOM WHICH CANNOT BE MOVED*

(continued from the previous issue) ... The Apostle Paul taught the same kind of thing in Romans 8:19-22, "For the earnest expectation of the creature (now by "creature" or "creation" is meant all manner of inanimate objects, such as the geological plates under the Philippines and California and Britain) waiteth for the manifestation of the sons of God. For the creature was made subject to vanity, not willingly, but by reason of him who hath subjected *the same* in hope, because the creature itself also shall be delivered from the bondage of corruption into the glorious liberty of the children of God. For we know that the whole creation groaneth and travaileth in pain together until now."

Now, I ask you, who subjected creation to vanity, as it says, "in hope"? The devil? No! Satan subjects nothing to anything in hope; only **GOD** is a God of hope. God subjected creation to vanity in hope, so that when the curse came upon the world with all of its manifold decaying and vanity, it was God bringing a curse on the world for sin - but in hope!

If you were to ask, "Why should God ordain that there be an increasing frequency and intensity of earthquakes toward the end of the age, as the Lord draws near?" the biblical answer would seem to be that God intends to give hope-filled and shocking warnings, the same way labour pains are hope-filled warnings that a mother and father should get ready and go to a safe place to have the baby. God gives birth-pangs to the world so that the world will wake up and know something is about to happen. This is a great mercy: that with all of the tragedy in the calamities of the world, it is the loud, sombre voice of a holy God saying, "Get ready! There's a shaking still to come that will leave no house standing, no building standing, no place to stand but My throne." That's the meaning of earthquakes: they are warnings! And there'll be an increasing number of calamities, so that there's a growing sense of unsettledness in this world, and people grasp and hang onto money, and some cling to power, and some go after alcohol, and some go after drugs, and some go after illicit sexual relationships, and only a few have their love not grow cold because lawlessness is multiplied. Those will be the ones who hear the voice of the Lord in the shaking of our world. Open your eyes to read the signs of the times so that you won't be taken off-guard when the calamity comes - whether it is your own little private calamity of a stopped heart, or whether everybody together rolls with the earthquake. It is coming, and the Lord is warning us that it is coming. Again and again and again He is shaking people awake to the reality of the instability of this world and the desirability of the unshakable kingdom that He offers.

Before the end of this age, God is giving to **everyone who believes** in His Son **the gift of a kingdom that cannot be moved** and will never end.

This is the message of the entire Bible. But in order to see it, we should look at verse 28 of our text: "Wherefore we receiving a kingdom which cannot be moved..."

Notice with me that we've already received it. Verse 27 says that what can be shaken will be swept away in one last great shaking, and that what is unshakable will remain. Then verse 28 says that we've already received that unshakable kingdom.

This is the great joy of being a genuine Christian believer. It doesn't matter whether you live San Francisco, California, or Newport, South Wales, or on the island of Luzon in the Philippines - you have a kingdom which has already been given to you, and your life in Christ is **UNSHAKEABLE**.

That doesn't mean that there weren't any Christians killed in the rubble of those buildings. There probably were. We share in the vanity and futility and decay and calamities of creation as long as we're in the body. Romans 8:23 says, "And not only *they*, but ourselves also, which have the first fruits of the Spirit, even we ourselves groan within ourselves, waiting for the adoption, *to wit*, the redemption of our body." When the flood comes, even we believers in Jesus Christ may drown. When the tornado comes, we may lose our homes and church property. When the earthquake strikes, we may be crushed under the rubble.

No, my friends, receiving an immovable kingdom does not mean safety for the body in this world. It does not mean that we'll escape the earthquake. What it means is that "neither death, nor life, nor angels, nor principalities, nor powers, nor things present, nor things to come, nor height, nor depth, nor any other creature, shall be able to separate us from the love of God, which is in Christ Jesus our Lord" (Romans 8:38-39). It means the deep and abiding certainty that "whether we live, we live unto the Lord; and whether we die, we die unto the Lord: whether we live therefore, or die, we are the Lord's. For to this end Christ both died, and rose, and revived, that he might be Lord both of the dead and living" (Romans 14:8-9). It means that "here have we no continuing city, but we seek one to come" (Hebrews 13:14): "a city which hath foundations, whose builder and maker *is* God" (Hebrews 11:10), "a kingdom which cannot be moved" (Hebrews 12:28) - forever. It doesn't mean that the judgment won't begin at the house of God. The Apostle Peter tells us (1 Peter 4:17) that it will.

And this brings us to our final point - that **God is a consuming fire**.

In view of all of these things - the free gift of an unshakable kingdom - we ought to serve God with reverence and godly fear, remembering that our God is a consuming fire.

Verses 28 and 29 tell us: "Wherefore we receiving a kingdom which cannot be moved, let us have grace, whereby we may serve God acceptably with reverence and godly fear: for our God *is* a consuming fire."

The question for believer and unbeliever alike today is this: are you serving the immovable God, or are you worshipping shakeable possessions? Is your heart steadfastly fixed on God? Is Christ Himself your greatest treasure, or is the world out there your treasure? Is God your security, or is your pension plan your security? Is God your fellowship, or is your own family the sum-total of your fellowship? Are you an idolater? Is Christ your portion in this life, or is the world your portion? Do you stand with reverence and godly fear before the power and holiness of this God, who is a consuming fire toward all sin, and do you clothe yourself with the flame-resistant righteousness of Jesus Christ, so that the fire of God can be seen from within you as glory and not as punishment?

One thing that the recent cyclone and earthquakes should reinforce in our minds is the importance of holding loosely to material things. In one powerful stroke, accumulated possessions for which people had laboured for many years were turned over to wind and rain, or a quaking ground, and soon followed by...looters.

Receive the kingdom which cannot be moved. Jesus says to us, "**Verily I say unto you, whosoever shall not receive the kingdom of God as a little child, he shall not enter therein**" (Mark 10:15). See how simple it is? What does "**a little child...**" mean? It means that you humble yourself and recognize that you cannot possibly make a place for yourself to stand. You simply humble yourself like "**a little child...**" You recognize that there is a Father in heaven. You see the gift offered to you through His Son Jesus Christ - forgiveness and the hope of everlasting life and a firm kingdom that cannot be shaken - and you extend your hands and say, "Sinner though I am, I receive it; this is now my portion forever and ever." Will you do that today?

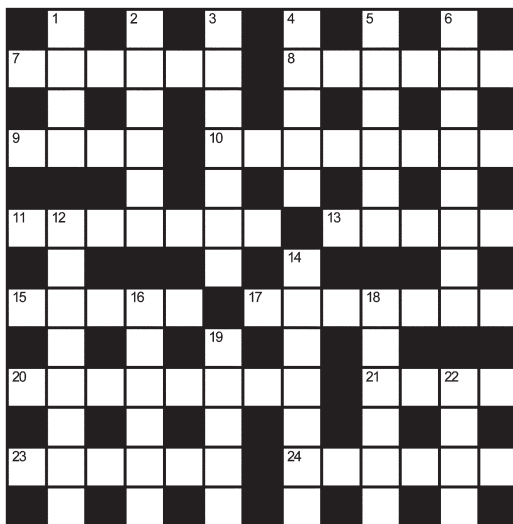
Crossword

Across

- 7 Wait upon (6)
- 8 Educated (6)
- 9 Leave out (4)
- 10 Buy (8)
- 11 Rebuked (7)
- 13 Cost (5)
- 15 Areas within a house (5)
- 17 Covered with thorns (7)
- 20 Against the current (8)
- 21 Curve on bottom of foot (4)
- 23 Edible bulbs (6)
- 24 Employ (6)

Down

- 1 Very small particle (4)
- 2 Relating to the teeth (6)
- 3 Modified (7)
- 4 Celestial bodies (5)
- 5 Writer (6)
- 6 Involving the body (8)
- 12 Cutting with an axe (8)
- 14 Metal wind instrument (7)



- 16 Technique (6)
- 18 Alter (6)
- 19 Sound practical judgment (5)
- 22 Wire enclosure used for birds (4)

Sudoku

1	3	4	2		9		8	
				1			4	3
7	6	8	3				9	
3				9				
4						5		
		9	1				7	
	4	6	5	7				
5					4		2	
8	1	3		2				

The object of sudoku is to insert the missing numbers in the boxes to satisfy just one condition: each row, column and 3x3 box must contain the digits 1 through to 9 exactly once. This can be done by applying logic – you do not have to guess.

Solution on page 41

U
L
L
Y
S
E
S
LTD



THE COMPLETE BUILDING SERVICE

- New Builds
- Extensions
- Conversions
- Restorations
- Renovations
- Kitchens
- Bathrooms
- Plumbing
- Plastering
- Carpentry
- Decorating
- Tiling

- Assistance with your building project from planning to completion
- Excellent relations with local building inspectors
- 30 years experience
- Family run company with a reputation for quality
- Directly employed, skilled tradesmen

Insurance repairs also undertaken

Suffered fire, flood, leak, impact or storm damage?

We are an **approved contractor** for many of the most well known insurance companies

Call 01633 612444

01633 213033

www.ullyses.com



R J PHILLIPS INTERIORS

CURTAINS—BLINDS—SOFT FURNISHINGS—TRACKS AND POLES



NEW SHOWROOM



CUSTOM MADE SOFT FURNISHINGS, DESIGN AND FIT

- Wide range of fabrics
- Alterations
- No job too big , or too small.
- Use of own fabric acceptable
- Quality, expert service at affordable prices

FREE quotation, measure and design service

www.rjphillipsinteriors.co.uk

Tel : 01633 267753 Mob: 07906 040417

enquiries@rjphillipsinteriors.co.uk

59 Church Road, Newport, NP19 7EJ

St David's Hospice Care

By supporting the work of St David's Hospice Care, you are making a positive difference to patients and their families throughout Newport, Caerphilly, Monmouthshire, Torfaen and South / Mid Powys. Funds raised provide comprehensive palliative care and support to patients and their families at a very difficult time of their lives. Our aim is to ensure patients have 'real' choice to receive individual tailored care, surrounded by friends and families.

Destination Blue Ride Collaboration Party Friday 20 September 2019

St David's Hospice Care **Acorn**

Acorn Dalmatian and his collection of toys

• Fri 20 September 2019
• Rodney Parade, Newport
• 7pm - Midnight
• £20 per person

Join us to celebrate raising over £250,000 for local hospice care. Ticket includes 1 hour meal and entertainment.

To book please call 01633 851051 or visit www.stdavidshospicecare.org

Go Pink Friday 20 September 2019

St David's Hospice Care *Bringing care home*

40th Anniversary

Fri 20 September 2019
Celebrate 40 years of St David's Hospice Care

Can you help us fundraise?
Get in touch to help us provide free local hospice care

For more information please contact
www.stdavidshospicecare.org
01633 851051 or email hello@stdavidshospicecare.org

Skydive Swansea Saturday 21 September 2019

St David's Hospice Care *Bringing care home*

Come and celebrate our 40th Birthday with us at **Skydive Swansea**

Skydive for St David's Hospice Care in Swansea
Saturday 21 September 2019

Only 30 Spaces Available

To book your place please contact:
Skydive Swansea direct on 01792 207035 or visit www.skydiveswansea.co.uk/skydive/charity

Three Peaks of Wales 21 September 2019

St David's Hospice Care *Bringing care home*

3 PEAKS OF WALES

SAT 21 SEPTEMBER 2019

OVER 30KM, HEAVILY SLOPED ASCENT, START ON SWANSEA

Are you ready for the challenge?
We invite you to participate in the Three Peaks of Wales, Snowdon, Cadair Idris and Pen y Fan circuit

www.stdavidshospicecare.org
01633 851058

Transporter Bridge Abseil Saturday 5 October 2019

St David's Hospice Care *Bringing care home*

Transporter Bridge Abseil

Sat 5th October 2019
The Transporter Bridge, Newport
£30 Entry Fee
Superb fancy dress 100% optional

Can you be a hero for your local hospice?
Come to Swansea Abseil 19th September 5-8pm
www.stdavidshospicecare.org
01633 851051

24 HOUR TEAM RELAY CHALLENGE

CYCLONE 24 NEWPORT

OCT 20th - OCT 21st 2019

MIDDAY - MIDDAY
THE UK'S ONLY 24 HOUR VELODROME CHALLENGE

TRACK RACES PROVIDED
OPEN TO ALL ABILITIES
CORPORATE TEAM CHALLENGE
BEGINNERS WELCOME
TEAMS OF SIX

WILL YOU BEAT THE BOARDS IN 2019?

24 TEAMS | 24 HOURS | VELODROME

REGISTER YOUR TEAM TODAY
www.stdavidshospicecare.org

Christmas Cinema Night Wednesday 11th December 2019

St David's Hospice Care *Bringing care home*

Christmas Cinema Night

Hosted by St David's Hospice Care at Cineworld, Newport Retail Park (Spoyty)

Wed 11 December 2019
£6.00pm arrival, 7.30pm film

Join us at Cineworld Newport for a special screening of **Miracle on 34th Street** (1994 version)

For bookings:
Call 01633 851051 or visit www.stdavidshospicecare.org

Like Retro & Vintage... E-Shop

St David's Hospice Care *Bringing care home*

LIKE RETRO & VINTAGE...

YOU CAN PURCHASE ITEMS FROM OUR E-SHOP

Check out our selection of retro and vintage items online and support St David's Hospice Care. Items include: watches, clocks, lamps, books, cards, postcards, magnets, keyrings, pens, pencils, notebooks, etc.

Unit 1, Withey Court, Ty Coch Way, Cwmbran, NP44 7EZ
www.stdavidshospicecare.org
01633 987006 online shop@stdavidshospicecare.org

St David's Hospice Care Lottery

Your Local Hospice Lottery

Supporting Hospice Care in our community

Play online at:
www.stdavidshospicecare.org
or ring us: 01633 851051

First prize £1000!
Second Prize £500
Third Prize £250
Fourth Prize £100

24 weekly prizes

Join our Lottery



Take part in a local collection



Bringing care home



St David's Hospice Care Blackett Avenue, Newport, NP20 6NH
Telephone: 01633 851051 Email: fundraising@stdavidshospicecare.org
www.stdavidshospicecare.org

Find us on: [f](https://www.facebook.com/stdavidshospicecare) [t](https://www.twitter.com/stdavidshospicecare) [in](https://www.linkedin.com/company/stdavidshospicecare) [ig](https://www.instagram.com/stdavidshospicecare)

Registered charity number: 1010576



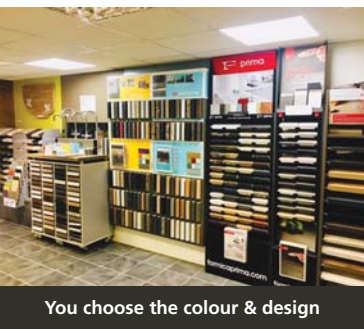
Picture shows Tristone Iris Worktops with integrated solid surface sink recently fabricated and installed by WT Laminates

We supply, fabricate and Install

SPECIALISTS IN WORKTOPS AND PANELING

- We have a large showroom with a massive selection on display
- Remember to bring approximate sizes for an accurate no obligation quotation
 - Most can be ordered for next day delivery to any location
 - Fitting and fabrication services available

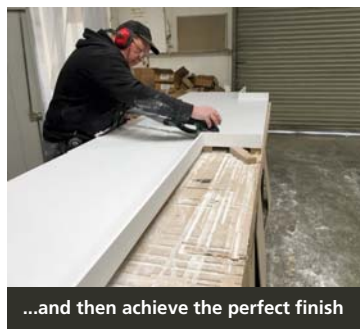
PLEASE VISIT OUR WEBSITE FOR MORE INFORMATION OR QUOTATION BY EMAIL



You choose the colour & design



We then template and cut to size...



...and then achieve the perfect finish



Units 10-12 Newport Business Centre, Corporation Road, Newport NP19 4RF
01633 251908 info@wtlaminates.co.uk www.wtlaminates.co.uk

Opening Times

Mon - Thurs 8am - 5pm, Fri 8am - 4.30pm
Also Open Saturdays 9am - 1pm

Tornado in Newport

Early on a sunny morning in July a Tornado passed through Newport leaving a trail of steam and a group of happy railway enthusiasts, young and old, all feeling that the early start had been well worth it. Built in 2008, the Tornado is the

first mainline steam engine to be built in the UK since the 1960s. The magnificent steam engine set off on its Pembroke Coast Express journey from Bristol, travelling to Newport, Cardiff, Bridgend, Port Talbot, Swansea, Llanelli, Carmarthen and Tenby.



The £3m locomotive is owned by a trust and was built over an 18 year period.



BEACHES IN WALES

Caerfai Bay



A small rocky cove at high tide, sandwiched between towering cliffs, one mile south of the UK's smallest city, St David's. The beach is accessed by following a path through the craggy cliffs and down a steep set of steps. At low tide, a sandy beach is revealed with lots of rock pools to explore. You

won't find much in the way of beach amenities at Caerfai Bay and there is no lifeguard, so care should be taken if swimming here as currents are strong and changeable. If you are passing or on holiday in the area, the magnificent Cathedral is definitely well worth a visit.

HSL

Painting & Decorating

Interior & Exterior Home Improvement

Julian: 07429 854 505
Michelle: 07443 460 323

Local Reliable Service Free Quotes 

S.CLODE FELT ROOFING

LOCAL ROOFER

- Competitive Rates
- No Job Too Small
- UPVC Fascia & Guttering Repaired & Cleaned



Call Stephen on:
01633 300913
07778 496385

Advertise
your business
from only

£50
per issue

 **07725 888070**
01633 892771

contact@swdirectories.co.uk

Black Cat

Cleaning Services



Professional Cleaner
 For All Your Office Cleaning Needs
 Laundry & Ironing Service
 No Job Too Small

Call Louise on:
07791 035413
www.blackcatcleaningservices.co.uk

Puzzle Solutions

Puzzle Solutions

Crossword

Across: 7 Attend, 8 Taught, 9 Omil, 10 Purchase, 11 Scolded, 13 Price, 15 Rooms, 17 Prickly, 20 Upstream, 21 Arch, 23 Onions, 24 Engage.

Down: 1 Atom, 2 Dental, 3 Adapted, 4 Stars, 5 Author, 6 Physical, 12 Chopping, 14 Trumpet, 16 Method, 18 Change, 19 Sense, 22 Cage.

Sudoku

1	3	4	2	6	9	7	8	5
9	2	5	7	1	8	6	4	3
7	6	8	3	4	5	2	9	1
3	5	1	4	9	7	8	6	2
4	7	2	6	8	3	5	1	9
6	8	9	1	5	2	3	7	4
2	4	6	5	7	1	9	3	8
5	9	7	8	3	4	1	2	6
8	1	3	9	2	6	4	5	7

HALES TELEVISION

Est. 1969

 **freesat** 

Aerial Installation and Repair

- Digital Aerial Installation
- Extra Aerial Points Fitted
- T.V. Reception Problems Fixed
- Freesat Installed
- Satellite Dish Alignment
- LCD/LED Television Repairs
- Free Quotations

Professional service from a
family owned business for 48 years!
Give us a call today on

01633 266563  Find us on Facebook

email: halestelevision@yahoo.co.uk www.halestelevision.co.uk



THE ULTIMATE GARDEN FENCE

Safe, Secure & very, very strong...



COLOURFENCE ARE TRANSFORMING GARDENS ACROSS NEWPORT, CWMBRAN, CAERLEON, PONTYPOOL & MONMOUTHSHIRE

It may do "exactly what it says on the tin" but let's face it, treating a timber fence can never be called fun! In fact, owning a timber fence isn't much fun either with costly, time consuming maintenance and repairs almost every year.

Finally, the alternative to timber fencing... our fence goes up and stays up, resisting gusts of up to 130mph!

ColourFence fencing solutions are made from innovative Colorbond steel, virtually maintenance free with an occasional wash down with water to keep it looking as good as new - so you never need to pick up that paintbrush again!
Guaranteed not to rot, warp, chip or peel for 25 years.

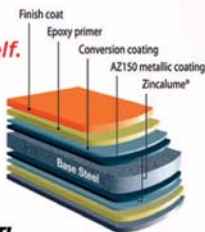
Available in a variety of heights and colours with or without trellis, our skilled installation team will make short work of transforming your garden.

The best news is the pricing is just as attractive, starting costs are in line with comparable systems but offer the ongoing peace of mind. Your investment will continue to save time and money year after year.

For those of us who want a low maintenance garden, ColourFence promises a life time of hassle-free enjoyment.

The Fence that repairs itself.

If you scratch or cut ColourFence, the ingenious zinc element in the Zincalume steel reacts with moisture to form a protective barrier to prevent any corrosion with no action needed from you.



STRONG, SECURE & BUILT TO LAST!

The only fence that won't

☑warp ☑crack ☑shrink ☑rot ☑peel ☑break ☑blow over

...Well for **25 years***, at least!



For a **free** no-obligation site visit, please call **Chris & Karen** on

Tel: **01633 211860** | www.colourfence.co.uk



Outstanding quality,
unbeatable value
and guaranteed to be
maintenance free!

A truly top end
product, at a truly
affordable
price.



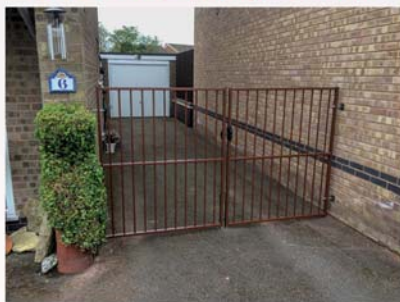
Choosing your railings always used to be a trade-off between price and quality. The impressive appearance that beautifully designed railings give to a property would usually come with an equally impressive price.

ColourRail has shaken up this very traditional market. Not only does ColourRail offer a **truly top end product, but they are able to do so at a truly affordable**. What's more, because of the specialised process they use to powder coat their galvanised steel components, we are more than happy to **guarantee† them against corrosion for a full 10 years.**

For the next 10 years you need never pick up a brush, repaint or indeed worry about the condition of your railings. In contrast ColourRail railings require just an occasional wash down to keep them looking as bright and as impressive as when they were installed. And you will have also saved a good deal of expense.

From a single side gate, to driveway gates, to a decorative border, to a feature front garden, between existing pillars, or freestanding no job is too big or small.

You can choose from a selection of colours, a range of heights and from an array of Loop, Spear & Flat tops to complete the look.



ColourRail in detail...

- High quality galvanised steel with architectural grade powder coated finish.
- Choice of five standard colours and 300 RAL colours at an additional charge.
- Standard sizes or made to measure.
- 10-year maintenance-free guarantee† against corrosion and peeling.
- Supply and fit service if required with no-nonsense 'ALL-IN' pricing with NO hidden extras, NO obligation and NO pressure promise.



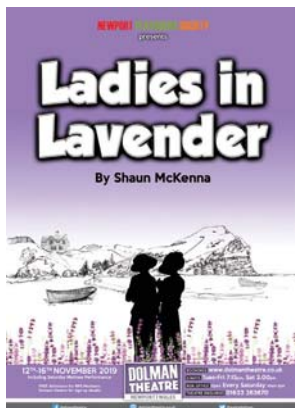
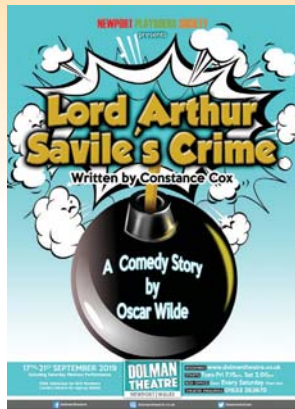
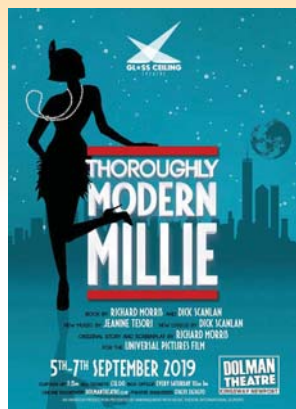
MADE IN BRITAIN
Checkatrade.com
Where reputation matters

To discover more about how ColourRail can transform your property don't delay -
call us today on: 01633 211860

and let us demonstrate how thanks to ColourRail beautiful gates and railings are now more affordable than ever.

* full terms & conditions available online

DOLMAN THEATRE NEWPORT



Booking: www.dolmantheatre.co.uk
Theatre Enquiries: 01633 263670

This months Hot Properties

FOR SALE



£720,000

Malpas Road, Newport

Stunning 5 bedroom detached Period farm house. Idyllically set within approx 1.5 acres.

FOR SALE



£379,950

Woodlands Drive, Malpas

Stunning 4 bedroom detached new build property finished to high specification.

FOR SALE



£330,000

Canberra Crescent, Newport

Immaculately presented 3 bedroom detached bungalow within ideal setting.

FOR SALE



£295,000

Gwenddwr Grange Close, Newport

Beautifully presented 4 bedroom detached family home. Driveway parking for two vehicles & single garage.

All properties available at time of going press

Kingston Newell

ESTATE AGENTS



**OUR
GUARANTEE**
WE WILL
MATCH ANY
OF OUR
COMPETITORS
FEES*

Key to *your* move...

Kingston Newell is one of the leading independent estate agents in Newport with more than 30 years experience. We pride ourselves on the level of service we offer to our clients.

- No sale - no fee
- Residential or commercial sales and lettings
- Internet promotion to 1000's of prospective buyers
- Call us for a free, no obligation valuation or property appraisal

Call us **today** on

01633 26 26 28

70 Bridge Street, Newport, South Wales NP20 4AQ

www.kingston-newell.com

OPEN DOORS

Doors Open Days or simply, Open Doors, provide free access to buildings not usually open to the public or which normally charge. Openings last year included 10 Downing Street & the U.S. Embassy in London, the Redcliffe Caves & Bristol Old Vic in Bristol whilst Tintern Abbey & Tredegar House were attractions closer to home. The Risca Museum first took part in 2016 and last year St. Mary's church also participated. Both are taking part this year and are being joined by the Risca Male Choir who occupy the old Risca Urban District Council Offices.

Risca Museum

The Museum is on the ground floor of the old Risca Collieries Workman's Institute which was built in 1916 for the local miners. After the colliery closed in 1967 it was used as the local benefits office for many years. In 1995 it was purchased by Islwyn Borough Council using European Heritage money, putting the Museum on the ground floor and additional classrooms for the Oxford House Adult Education Centre on the first floor. Caerphilly CBC disposed of the building in 2016 resulting in a 7-fold rent

increase for the Museum which is run by volunteers from the Oxford House Industrial History Society and receives no official financial support.

Although the Museum is open from 10am to 12.30pm every Saturday, for Open Doors it will be open from 10am to 4pm on both Saturday 28th & Sunday 29th September. As well as the Edwardian Chemist shop and the 1834 printing press from the Starling Press, on display will be many items not usually available including artefacts, photographs & maps. Also, on Sunday 29th there will be a short walk & talk on the Risca Long Bridge (maximum duration 1 hour, flat ground) starting from the Museum at 1pm.

St Mary's Church

The current Risca parish church, St. Mary's was built in 1852 in a Gothic revival style. The church will open from 10.30am to 4pm on Saturday 28th September. The historic parish records of Baptisms, Marriages & Burials will be available for inspection. There will be leaflets available indicating the location of some of the most interesting sights and booklets on the full history of the church will be on sale. Refreshments will be



Risca Colliers Institute

available.

Risca Male Choir

The old Council Offices on St. Mary's Street will open from 10.30am to 4pm on Saturday 28th September. The building was completed in 1912 for the Risca Urban District Council and remained its headquarters until it ceased to exist after local government reorganisation in 1974. Since 1988 it has been the home of RMC, the Risca Male Choir. Choir members will be in attendance and the illustrated history of the choir 'The First Forty Years' and selected CDs will be available to purchase.



Risca council offices



Risca, St Marys Church

Live well, your way
with care at home

Your home is where you feel the most comfortable
and the happiest.

It's the place you know the best. Why would you move away from the place you love if you are faced with needing some extra care and support when you age? If you want to stay living comfortably at home, we can help you make that choice an informed one.



Contact us for more **information**

Locally owned, family run

Home Instead Newport
4 St. John Crescent, Rogerstone
Newport, NP10 9EY

Telephone: **01633 740028**

**[www.homeinstead.co.uk/
newportcaerleonandcwmbra](http://www.homeinstead.co.uk/newportcaerleonandcwmbra)**



British
Gymnastics
More than a sport

WE HAVE MOVED OUR WEEKDAY CLASSES TO AN EXCITING NEW VENUE WITH SPRUNG FLOOR

Unit 4 Wern Industrial Estate, Rogerstone, NP10 9FQ
(nr Tiny Rebel Brewery and Ballet Cymru)

GYMNASTICS AND CHEERLEADING

Pre-School Classes

- Parent and child gymnastics for under 2s and 2-4yrs.
British Gymnastics themed badge & certificate for all.
- Independent gymnastics and cheerleading for 3-4 yrs.
- Offering fun, excitement and challenges in a caring environment.
- Brightly coloured, age appropriate equipment.

School Age Classes

- Gymnastics for children from reception - year 8.
- Cheerleading for children from reception - year 6.


**FREE TRIAL FOR ALL NEW
PRE-SCHOOLERS**



www.hohgymnastics.co.uk | info@hohgymnastics.co.uk
07768 485892



GYMNASTICS AND CHEERLEADING CLASS TIMETABLE SEPTEMBER 2019 - JULY 2020

MON	TUE	WED	THU	FRI		SAT
All Weekday classes are held at Unit4 Wern Industrial Estate Rogerstone NP10 9FQ	9.15-10.00 Parent/Child 2-4yrs	9.15-10.00 Parent/Child 2-4yrs	9.30-10.15 Parent/Child 2-4yrs	9.30-10.15 Parent/Child 2-4yrs	All Saturday classes are held at Trinity Church Sports Hall Glasllwch Lane Newport NP20 3PU	9.30-10.15 Cheerleading Rec-Yr6
	10.15-11.00 Independent 3-4yrs*	10.15-11.00 Under 2yrs	10.30-11.15 Independent 3-4yrs*	10.30-11.15 Independent 3-4yrs*		10.15-11.00 Yr3-Yr6
	11.15-12.00 Parent/Child 2-4yrs	11.15-12.00 Parent/Child 2-4yrs	11.30-12.15 Parent/Child 2-4yrs	11.30-12.15 Under 2yrs		11.00-11.45 Rec-Yr2
	12.30-1.15 Independent 3-4yrs*	12.30-1.15 Parent/Child 2-4yrs	12.45-1.30 Independent 3-4yrs*	12.45-1.30 Independent 3-4yrs*		11.45-12.30 Rec-Yr2
	1.30-2.15 Independent 3-4yrs*	1.30-2.15 Independent 3-4yrs*	1.45-2.30 Parent/Child 2-4yrs	1.45-2.30 Parent/Child 2-4yrs		1.00-1.45 Independent 3-4yrs*
	2.15-3.00 Independent 3-4yrs gym/cheerleading	2.15-3.00 Independent 3-4yrs gym/cheerleading				1.45-2.30 Parent/Child 2-4yrs
3.45-4.30 Rec-Yr2	3.45-4.30 Rec-Yr2	3.45-4.30 Rec-Yr2	3.45-4.30 Rec-Yr2	3.45-4.30 Rec-Yr2	 www.hohgymnastics.co.uk 07768 485892	
4.30-5.15 Rec-Yr2	4.30-5.15 Rec-Yr2	4.30-5.15 Rec-Yr2	4.30-5.15 Rec-Yr2	4.30-5.15 Rec-Yr2		
5.15-6.00 Yr3-Yr6		5.15-6.00 Yr3-Yr6		5.15-6.00 Advanced Yr4-Yr8		
				6.00-6.45 Tumbling Yr4-Yr8		

PRE-SCHOOL
Parent/child gymnastics 7mths - 2yrs
Parent/child gymnastics 2-4yrs
Independent gymnastics 3-4yrs *dob: 01.09.15-31.08.16
SCHOOL AGE
Gymnastics: Reception - Yr8
Cheerleading: Reception - Yr6

Term Dates:
 04.09.19 - 26.10.19
 4.11.19 - 21.12.19
 6.1.20 - 15.2.20
 24.2.20 - 4.4.20
 20.4.20 - 23.5.20
 1.6.20 - 18.7.20

All weekday classes are held at:
 Unit 4 Wern Industrial Estate
 Rogerstone NP10 9FQ

All Saturday classes are held at:
 Trinity Church Sports Hall,
 Glasllwch Lane Newport NP20 3PU



Autumn returns

I always write this article with mixed feelings because just as everyone is looking forward to six weeks of summer, I am thinking about the September article for the directory and of course by the time you read this Autumn will be upon us, the children will have returned to school, the trees will have that faint hint of red and gold glory, the nights will be pulling in and Rogerstone Roses W.I. will have begun its new programme.

Autumn will bring a new programme; it starts on September 10th with an evening entitled 'Wish you were here,'

rural Derbyshire decided, as we reached the M4, to die!

On September 24th we will host the St John's Ambulance; demonstrating and instructing how to use a defibrillator. This life saving equipment is now found in many urban and rural spots and although there are clear instructions inside every one some exposure and practical use can only be helpful. The speediness of response is vital and this promises to be a very useful evening indeed.

As most readers will be aware the W.I. is



creativity in classes covering everything from vegetable growing to photography. Two years ago, Rogerstone Roses won the 'Rose Bowl' for the most points awarded in our category - groups with large numbers, apologies can't remember the exact specifications. So, can we do it again? We certainly hope so, many ladies have dutifully filled in entry forms and for that the committee thanks them. I, myself am busy trying to knit a corsage, an interesting concept if you think about it or perhaps it is that I simply do not have the necessary skill, however I shall soldier on and enter something that is more akin to a posy I suspect.

W.I. also boasts several clubs, choir, book, bridge, mah jong and craft, they are all flourishing but all will welcome new members.

We meet at St Anne's Church Hall, High Cross, the official meeting starts at 7.30 pm but members arrive from 7.15 onwards to enjoy a cup of tea or coffee and a chat. Our advert in the directory also gives you a telephone number if you have any questions.

Liz James



probably best known for its cookery and craft items, although it is an organisation which encompasses so much more, but more of that another time! I digress slightly. This year the Gwent Federation of W.I.'s is holding its biennial show in October and this gives members throughout Gwent a chance to display their amazing



a chance for ladies to share their holiday snaps and anecdotal stories. I am always amazed at some of the peculiar things that happen to people as they travel around. Nothing funny or peculiar for my husband and myself, just irritating, the sat nav having been briefed to take us to

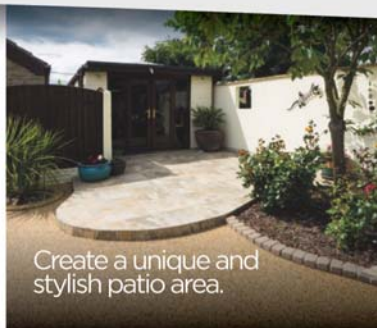
Revive your drive with Resin Drives



Combine extra parking space with stunning kerb appeal.



Give your outdoor space the 'wow' factor with landscaped pathways.



Create a unique and stylish patio area.

Why Choose Resin?

- Completely porous and puddle free
- Hardwearing, durable and weed-adverse
- 10 times more environmentally friendly than concrete
- Slip resistant, wheelchair friendly and excellent tyre traction



Why Choose Resindrives.co.uk?

- Highly skilled installation team
- No subcontracting
- Multiple colour schemes & styles to choose from
- Over 10 years experience

For ultimate kerb appeal add a state of the art garage door, maintenance-free composite fencing or a realistic artificial lawn



CALL TODAY FOR A FREE QUOTE AND SURVEY

0800 007 5733
www.resindrives.co.uk

*Resindrives.co.uk is a trading name of resindrives.co.uk ltd. Authorised and regulated by the Financial Conduct Authority (FRN743675) We are a credit broker and not a lender, we offer credit facilities from a panel of lenders. Finance subject to status. Terms and conditions apply.



THE ORIGINAL RESIN CO.

Boiler service offer...

£45.00 + VAT*

Professional boiler servicing with pride.

Our servicing offer includes a full system check and boiler filter clean out.

Quote
RDBoiler
when you call
*excludes back boiler units and powermax boilers

The logo for ecowarmth, featuring a stylized leaf icon above the company name in a sans-serif font.

www.ecowarmth.wales

Full central heating systems
24 hr breakdowns & maintenance
Boiler repair & installation
Boiler and fire servicing
Unvented cylinder installation & servicing
Bathroom design & fit out
Radiator installation
Fires & surrounds
Gas safety certificates
General plumbing
365 days a year helpline

Contact our family run team on

01633 894 113
01633 615 800

