

CAERLEON

# DIRECTORY



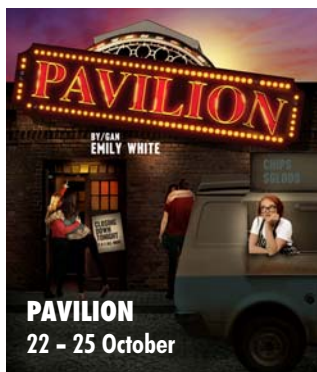
ISSUE 72  
SEPTEMBER/  
OCTOBER 2019



SW DIRECTORIES

# THE RIVERFRONT THEATRE & ARTS CENTRE

Here are some highlights set to delight theatre & cinema lovers in the coming weeks ...



**be delicious!**  
with  
**Slimming World**

**CAERLEON  
SCOUT HUT**

**MONDAY - 5.30pm & 7.30pm**

**TUESDAY - 9.30am**

**Tel: Jude 07815 185816**

[slimmingworld.co.uk](http://slimmingworld.co.uk)



0344 897 8000



# RUNNING OUT OF SPACE?

We have the answer at **The Storage Centre Risca**

**Personal and Business  
Storage**

**Store Furniture, Stock or  
Documents**

**Packing materials available**

**Easy access to your items**



**Call us for a FREE Quotation on 01633 615600  
RBF Business Centre, Risca, Newport, NP11 6NP**



# Welcome!

Hope you all had a wonderful summer and are looking forward to Autumn and the usual seasonal activities ahead.

We are a small independent business and our aim is to provide an informative and interesting magazine that positively contributes to both community life and local businesses. A full list of local events, activities, groups and churches are available on our website, [www.swdirectories.com](http://www.swdirectories.com)

Please don't forget to get in touch soon if you would like to advertise your business in our November/December edition. This will be our Christmas edition so may be an excellent opportunity to promote your business to lots of potential customers at this time of year. We deliver to 30000 homes all over Newport; this is an ideal way for you to reach prospective customers and support the local community at the same time. Advertising in the Directories has proved successful for so many of our advertisers, some have been with us since the very first magazine in May 2006.

A huge thank you to all our advertisers - we are grateful for all your support.

Best wishes

Susan  
x

Advertising enquiries:

Telephone Leslie on 07725 888070 or 01633 892771  
or email [contact@swdirectories.co.uk](mailto:contact@swdirectories.co.uk)

**COPY DEADLINE FOR THE NOV/DEC EDITION - MONDAY 30th SEPTEMBER**

Editor: Susan Woolford

Sales & Distribution: Leslie Woolford

The editor cannot accept any liability to any party for loss or damage caused by errors or omissions. All artwork is accepted on the strict condition that permission has been given for use in the publication.

SW Directories does not officially endorse any advertising material included within this publication.

All rights reserved. No part of this publication may be reproduced without the prior permission of the editor.





# ROGERSTONE

Landscaping & Driveways Ltd

**Driveway, Landscaping and  
Building Specialist**  
All Aspects of Work Undertaken

Google

5 Star Customer Rating  
★★★★★  
READ REVIEWS

Marshall's  
REGISTER  
APPROVED INSTALLERS

Yell

★★★★★  
5 Star Reviews

Find us on:  
facebook

**Don't Delay CALL today for a  
Free quotation**

**Tel: 01633 449836  
Mob: 07765 240400**

Email: [Rogerstone.ld@hotmail.com](mailto:Rogerstone.ld@hotmail.com)

Web: [rogerstonelandscapingdriveways.co.uk](http://rogerstonelandscapingdriveways.co.uk)

# Chillies



**Indian Takeaway**

12 Risca Road, Newport NP20 4JW  
[www.chillies-newport.co.uk](http://www.chillies-newport.co.uk)



Open 5pm-late  
7 days a week

We now Deliver to  
Caerleon. Minimum  
order £25 and a  
£3 delivery charge.

Pay cash and receive a  
10% discount on  
collection of orders  
over £15  
(Excludes any drinks)



**Awarded a Five  
Star Food  
Hygiene Rating  
for the last  
three years.**

VISA MasterCard VISA  
All major credit cards accepted.  
No cheques

**01633 255 698  
01633 212 456**

# Molyn Builders

- Extensions, loft conversions and garage conversions
- Full or partial home refurbishment
- Structural opening up work
- Kitchens
- Bathrooms
- All plumbing and electrical work



**ALL WORK GUARANTEED**  
CALL FOR A QUOTATION OR ADVICE  
**TELEPHONE 01633 250287**

**[www.molyn.co.uk](http://www.molyn.co.uk)**

Email enquiries to [info@molyn.co.uk](mailto:info@molyn.co.uk)  
15 Allt-yr-yn Avenue, Newport NP20 5DA



# Captive animals

Later this year the English government is set to introduce a bill banning the use of wild animals in circuses. They are already banned in Scotland, and there are plans to introduce similar legislation in Wales. At first sight this would appear to be well supported by animal lovers throughout the country - lions tamed by whip-wielding ringmasters and elephants dancing on their hind legs is unacceptable in 21st century Britain - but what is the definition of 'wild'? At the present time, of the two touring circuses in the UK there are only 19 animals: six reindeer, four camels, four zebras, two raccoons, and one each of fox, macaw and zebu (no lions or elephants). Reindeer, camels and zebu have been domesticated for hundreds, if not thousands, of years by man, so where do you draw the line? Dogs and cats are considered domesticated, but there are wild dogs and some especially wild cats roaming the world.

Dog became man's companion thousands of years ago, assisting with hunting for food and sharing in the spoils. The common ancestor of domesticated dogs is the wolf and there is a rather nice piece of recently published research that proposes that man chose as his companion those wolves that had the ability to demonstrate greater facial expression, particularly eyebrow movement, and the DNA determining this ability was passed on through the generations. This DNA, which enables fine movement in the muscles above the eye, is present in dogs but not in wolves and man presumably selectively bred for those traits (as well as those for being good at hunting, of course) because they made their four-legged accomplice more companionable. When you next get sufficiently close to a wolf you will note there is minimal upper eyebrow movement (because it can't), then compare it with your own hound's facial expressions when you stare intently at each other and allow that frisson of warmth to embrace you.

So how long does a species have to be in the company of humans to be designated 'domesticated'? Most horses are generally tame and will approach when food is offered, but there are plenty of feral ones on the prairies that are wild and won't. In contrast, some backyard ducks will stay on your pond sufficiently long to breed many generations, but most ducks are wild and will fly for miles when disturbed. Sheep and cattle in the farm environment will eventually gather around if you choose to stand quietly in one of their fields, as they are inquisitive, however out on the mountain they would prefer to mind their own business, and want you to do the same. A few years ago I was in the Scottish Highlands with my reindeer herder friend; the weather was bleak with visibility no more than ten yards, and he suggested that we gather the deer. Bemused at his assured determination I joined him on the journey up the mountain and when we had climbed high enough my friend emitted low pitched Gaelic noises (I think!), and it was with disbelief that some ten minutes later my doubts were dispelled when I witnessed about forty reindeer emerge through the mist and start eating the lichen we had carried up the hill. There are no fences; they could have wandered

off to John o'Groats if they had wished. So which are domesticated? The reason I ask is that there are some who believe that no animal should be owned by man, and that keeping animals for gain is tantamount to abuse. This includes farming for food (meat, milk, butter, eggs) and clothing (wool, shoe leather), and the keeping of animals as pets, whether for riding, showing or purely companionship. There are fears that the bill to ban wild animals in circuses may set a precedent and open the door to bans on other types of activity such as falconry displays and zoos, and after that, who knows?

There will be an opportunity to see birds of prey and horses in action, also examples of this county's finest goats, sheep, pigs and cattle at the Usk Show and, judging by the number of people who attend each year, there remains great support for such an event. Note Saturday 14th September in your diary.

**Alastair Mitchell MRCVS**  
**Caerleon Veterinary Centre**  
**01633 430053**

## Caerleon Veterinary Centre



 Find us on  
Facebook

### Honorary vets to Usk Show

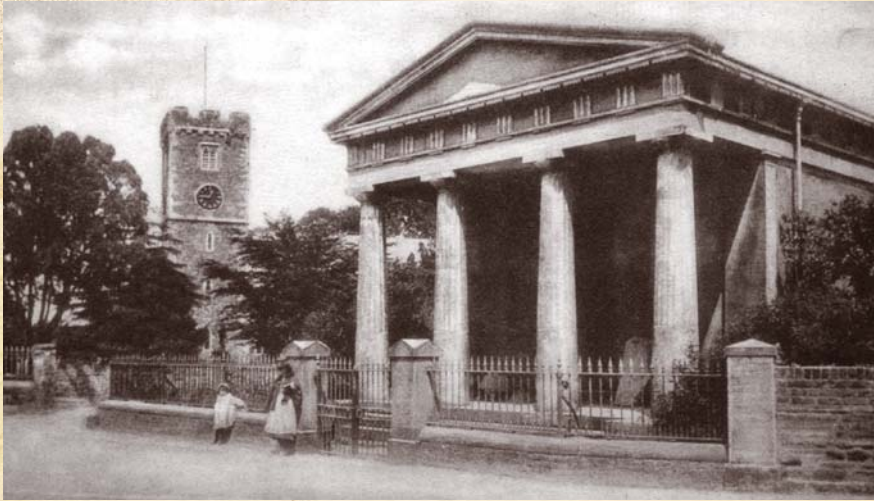
Please join us for  
refreshments and a  
chat in our  
marquee close to  
the main ring

**Caerleon Vets**  
Caerleon Usk Pontypool

**01633 430053**



# CAERLEON THEN & NOW



The Museum of Roman Antiques appearing as it did circa 1890s. The museum was opened to the public on 2nd August 1850. Some of the material used in this construction was retrieved from the old Market House which once stood on the Square. The signboard indicates an opening period of April to October with an admission charge of 3d for adults and 1d for children. School parties were admitted free.

Below is the same view taken in September 2015.



Extract taken from Norman Stevens's books of Caerleon. They can be purchased from Caerleon Post Office





# CRAWFORDS

Carpet and Upholstery  
Cleaning Specialist



Proud to be  
Endorsed



- Stain, Odour & Spot Removal
- Flood Damage/Restoration Work Undertaken
- Upholstery and Leather Suites
- Carpets & Rugs
- Competitive Prices
- 24 Hour Emergency Call Out
- Free Surveys/Estimates
- Full Liability Insurance
- Domestic & Commercial



**01633 265458 / 07840 554485**  
[info@crawfordscleaningservices.co.uk](mailto:info@crawfordscleaningservices.co.uk)  
[www.crawfordscleaningservices.co.uk](http://www.crawfordscleaningservices.co.uk)



# Tornado in Newport

Early on a sunny morning in July a Tornado passed through Newport leaving a trail of steam and a group of happy railway enthusiasts, young and old, all feeling that the early start had been well worth it. Built in 2008, the Tornado is the

first mainline steam engine to be built in the UK since the 1960s. The magnificent steam engine set off on its Pembroke Coast Express journey from Bristol, travelling to Newport, Cardiff, Bridgend, Port Talbot, Swansea, Llanelli, Carmarthen and Tenby.



The £3m locomotive is owned by a trust and was built over an 18 year period.



## BEACHES IN WALES

### Caerfai Bay



A small rocky cove at high tide, sandwiched between towering cliffs, one mile south of the UK's smallest city, St David's. The beach is accessed by following a path through the craggy cliffs and down a steep set of steps. At low tide, a sandy beach is revealed with lots of rock pools to explore. You

won't find much in the way of beach amenities at Caerfai Bay and there is no lifeguard, so care should be taken if swimming here as currents are strong and changeable. If you are passing or on holiday in the area, the magnificent Cathedral is definitely well worth a visit.



**Which?**  
Trusted trader

**A2B** AUDIO VISUAL

**LOCAL, RELIABLE & FRIENDLY**

- FREEVIEW, FREESAT & SKY
- AERIALS & SATELLITES
- NETWORKING & WI-FI
- SURROUND SOUND
- TV INSTALLATIONS
- TV WALL MOUNTING
- HIDDEN CABLES
- CCTV SYSTEMS

**digital**   
Approved Member



**BESPOKE AUDIO-VISUAL SOLUTIONS  
FOR EVERY BUDGET**

**CALL US ON 01633 560131**

**WWW.A2BAUDIOVISUAL.CO.UK**

# J. YOUNG PLASTERING

**Plastering & Painting Services**

- No Job Too Small
- Competitive Rates
- Call for a Free Quote
- Clean, Friendly & Reliable

Over 10 Years Experience

**01633 891456 / 07515 277547**

**f J Young Plastering Services**

# HSL

**Painting & Decorating**

Interior & Exterior Home Improvement

**Julian: 07429 854 505**

**Michelle: 07443 460 323**

Local Reliable Service Free Quotes 

**Established 1990**

**CURTAINS AND BLINDS**

**Soft Furnishings**

**Over 50 years experience in Interior Design. We invite you to call into our showroom and chat with us about your furnishing ideas**

Our fabric displays are from carefully selected suppliers such as Ashley Wilde, Clarke & Clarke, Belfield, Bill Beaumont to name but a few, all of which offer immense inspiration. From the initial selection of fabric to the final fitting stage, we offer the highest standards and make sure that you will be pleased with your choice.

**Love your fabric choices for your made to measure curtains and blinds**

**MADE BY US IN HOUSE**

**We love what we do - So will you!**




**Opening Hours:** Monday Closed. Tues, Weds, Thurs 9.30am-5.30pm.  
Friday 9.30am-1.00pm. Saturday 10.00am-2.00pm

**www.cwmbrancurtainsandblinds.co.uk email: cwmbrancurtainsandblinds@gmail.com**

**171 Larch Grove, Malpas NP20 6LA**

**Mob: 07887 677110**

**NEW BLIND CHOICES NOW IN**

# Newport Uskmouth Rotary boost Charity funds to over £180,000

Newport charities and volunteer organisations continue to benefit by thousands of pounds each year by taking part in the annual Newport Uskmouth Rotary's City Draw **and there is an opportunity for new organisations to join the 2020 Draw.** Affectionately known as the **NURD**, the event is genuinely a win/win scheme first introduced in Newport in September 2008. The concept is simple and hugely beneficial. The Club obtains prizes from sponsorship from various commercial and private sources. The Rotary Club prints the raffle tickets, **gives them** to the participating organisations who **keep the income from the sale of tickets.**

On average each year, more than £17,000 has been pumped into the charity sector of the City. The first Draw was in May 2009 and the most recent on 1st May 2019, when the Mayor of Newport drew the winning 11 tickets which were shared by Friends of the Newport Ship, Newport Philharmonic Choir, Newport MIND, Lliswerry Heart Link, Zimbabwe Volunteers Association, Adams Chorale, Cantorion Sanctaidd Choir, and ETA-mined. **£20,000 worth of tickets will be available for the next Draw (NURD20) and registration will take place in late October.** Beneficiaries of the Draw say:

**RN Association (Newport):** "A big thank you for inviting us again to take part in the Annual Draw. They provide everything – all we have to do is sell the

Newport Uskmouth  
**Rotary**  
& Satellites



tickets and keep the money and, this year, our funds were swollen by £1,500".

**Parkinson's Newport:** "We may not have won a prize but it was all in a good cause and we raised £395 for our funds".

**"Opt to Adopt" Dogs'**

**Home:** "We really appreciate the opportunity to take part and the funds raised will be put to good use".

**NURD19 first prize**

**Winner:** "Winning the top cash prize means that I can afford a holiday for the first time for many years. Thank you Rotary".

The Draw promoter, Keith Minton, says "This is just part of the contribution Newport Uskmouth Rotary makes to the City: other activities include the award-winning 'Young Carers' project, developing work in the City's first 'Men's Shed', the annual summer cycle ride for Prostate Cancer and the 'Tree of Light' at Christmas in Friar's Walk.



“ The event is genuinely a win/win scheme first introduced in Newport in September 2008. ”

If you are involved in running a charity, a youth activity, keep-fit class, PTA, church, choir etc. etc., you may be eligible to take part in the 2020 Draw. To learn more contact Keith Minton on [keithminton44@gmail.com](mailto:keithminton44@gmail.com)



# L J SYMONDS

ROOFING, BUILDING & MAINTENANCE

## ROOFING

- Tiling
- Slating
- Fibreglass
- Chimney stack repair
- UPVC Fascias

## BUILDING

- New Build
- Extensions
- Renovations
- Garage Conversions

## MAINTENANCE

- Gutter repair
- UPVC cleaning
- Roof repair
- Misted glass repair
- House painting



Visit [www.ljsymonds.co.uk](http://www.ljsymonds.co.uk) Email [leesymonds@hotmail.co.uk](mailto:leesymonds@hotmail.co.uk)

Tel: 01633 548688 Mob: 07506 292990

Unit 9 Pontymister Industrial Estate, Risca NP11 6NP





# St David's Hospice Care

By supporting the work of St David's Hospice Care, you are making a positive difference to patients and their families throughout Newport, Caerphilly, Monmouthshire, Torfaen and South / Mid Powys. Funds raised provide comprehensive palliative care and support to patients and their families at a very difficult time of their lives. Our aim is to ensure patients have 'real' choice to receive individual tailored care, surrounded by friends and families.

**St David's Hospice Care** *Bringing care home*

**Acorn Dalmatian**  
and wine celebration party

Friday 20 September 2019

7pm - Midnight  
£20 per person

Join us to celebrate raising over £250,000 for local hospice care. Ticket includes 100ml wine and entrance to the party.

To book please call 01633 851051 or visit [www.stdavidshospicecare.org](http://www.stdavidshospicecare.org)

**St David's Hospice Care** *Bringing care home*

**Go Pink**  
40th Anniversary

Fri 20 September 2019  
Celebrate 40 years of St David's Hospice Care

Can you help us fundraise?  
Get in touch to help us provide free local hospice care.

For more information please contact  
[www.stdavidshospicecare.org](http://www.stdavidshospicecare.org)  
01633 851051 or email [hello@stdavidshospicecare.org](mailto:hello@stdavidshospicecare.org)

**St David's Hospice Care** *Bringing care home*

**Skydive Swansea**

Come and celebrate our 40th birthday with us at Skydive Swansea in Swansea  
Saturday 21 September 2019

Only 30 Spaces Available

To book your place please contact Skydive Swansea direct on 01792 207035 or visit [www.skydiveswansea.co.uk/skydivelives/charity](http://www.skydiveswansea.co.uk/skydivelives/charity)

**St David's Hospice Care** *Bringing care home*

**3 PEAKS OF WALES**

SAT 21 SEPTEMBER 2019

OVER 3000 NEARLY 3000M ASCENT  
JAM IN SWANSEA

Why support for the challenge?  
We invite you to join us as we challenge the Peaks of Wales. Snowdon Cader Idris in the afternoon.

[www.stdavidshospicecare.org](http://www.stdavidshospicecare.org)  
01633 851058

**St David's Hospice Care** *Bringing care home*

**Transporter Bridge Abseil**

Sat 5th October 2019  
The Transporter Bridge, Newport  
£30 Entry fee. Superhero t-shirt being raised 100% optional.

Can you be a hero for your local hospice?  
Contact 01633 851051. Abseil t-shirt free with entry.

[www.stdavidshospicecare.org](http://www.stdavidshospicecare.org)  
01633 851051

**St David's Hospice Care** *Bringing care home*

**24 HOUR TEAM RELAY CHALLENGE**  
**CYCLONE 24**  
NEWPORT

OCT 20<sup>TH</sup> - OCT 21<sup>ST</sup> 2019

MIDDAY - MIDDAY  
THE UK'S ONLY 24 HOUR VELODROME CHALLENGE

TRACER BIKES PROVIDED  
OPENS TO ALL ABILITIES  
CORPORATE TEAM CHALLENGE  
BEGINNERS WELCOME  
TEAMS OF SIX

WILL YOU BRAVE THE ROAD IN 2019?  
24 TEAMS | 24 HOURS | VELODROME

**St David's Hospice Care** *Bringing care home*

**Christmas Cinema Night**

Hosted by St David's Hospice Care at Cineworld, Newport Retail Park (Spayty)

Wed 11 December 2019  
£10pp arrival 7.30pm

Join us at Cineworld Newport for a special screening of **Miracle on 34th Street** (1994 version).

For bookings:  
Call 01633 851051 or visit [www.stdavidshospicecare.org](http://www.stdavidshospicecare.org)

**St David's Hospice Care** *Bringing care home*

**LIKE RETRO & VINTAGE...**  
YOU CAN PURCHASE ITEMS FROM OUR E-SHOP

Check our amazing range of items for sale on eBay and Facebook. All items are donated by the public and are available for purchase at a special price to help us raise funds for our charity.

[www.stdavidshospicecare.org](http://www.stdavidshospicecare.org)  
01633 987006 [online@stdavidshospicecare.org](mailto:online@stdavidshospicecare.org)

**St David's Hospice Care Lottery** *Bringing care home*

Host a loose change collection box

Join Today!

**Your Local Hospice Lottery**  
Supporting Hospice Care in our community

Play online at:  
[www.stdavidshospicecare.org](http://www.stdavidshospicecare.org)  
or ring us: 01633 851051

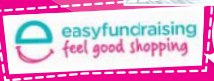
First prize £1000!  
2nd prize £100  
3rd prize £50  
4th prize £25  
5th prize £10  
6th prize £5  
7th prize £2  
8th prize £1

24 weekly prizes

Join our Lottery



Take part in a local collection



Sign up to Easy Fundraising  
easyfundraising.org.uk

*Bringing care home*

**St David's Hospice Care** Blackett Avenue, Newport, NP20 6NH  
Telephone: 01633 851051 Email: [fundraising@stdavidshospicecare.org](mailto:fundraising@stdavidshospicecare.org)  
[www.stdavidshospicecare.org](http://www.stdavidshospicecare.org)

Find us on: [f](https://www.facebook.com/stdavidshospicecare) [t](https://www.twitter.com/stdavidshospicecare) [in](https://www.linkedin.com/company/stdavidshospicecare) [ig](https://www.instagram.com/stdavidshospicecare)

Registered charity number: 1010576

AWARD  
WINNING  
GARDENS



# JAPONICA

LANDSCAPE CONSTRUCTION AND MAINTENANCE



Domestic & Commercial  
**Fully Qualified with over  
22 years' experience**

Fully Insured and Local  
Authority Approved

**Professional & Reliable**

Competitive Rates &  
Friendly Staff

Artificial grass • Turfing • Paving • Decking • Fencing • Driveways  
Patios • Block paving • Tree work • Hedge cutting • Grass cutting  
Pressure washing • Planting • Tidy ups • Invasive weed control



We cover South Wales & West England.  
Whether it's a one off visit or something  
regular you're looking for

**Now proud members of the  
Marshall's register**



**01633 376226** [Info@japonica.co.uk](mailto:Info@japonica.co.uk) **07730 592009**



Follow us for News and Offers



**[www.japonica.co.uk](http://www.japonica.co.uk)**





# The Golden Age of Smuggling

by Paul Minton

**I write this article at the height of summer, when the country has recorded its hottest July ever temperature. Welsh beaches have been invaded by throngs (or should that be thongs?) of sun worshippers, whose modesty is protected only by scanty bikinis and budgie smugglers. Of course, budgie smuggling is not the only sort of smuggling that takes place in the UK. Trafficking in both drugs and people is an ever-present blight but old school smuggling of goods is never out of fashion. In 2012, for instance, contraband consisting of 25,000 bottles of red wine, 67,000 cigarettes and 92 kilos of tobacco was recovered from just a single container at Newport Docks.**

According to estimates, Britain once had as many as 25,000 smugglers with another 100,000 people actively involved in distribution. The Royal Navy, with its complement of 50,000 sailors, struggled to police national waters and it was only after the conflict with France had ended with the defeat of Napoleon that the war against the smuggler gained traction.

As a major port, Newport has been awash with illicit goods for hundreds of years, depriving HM Customs and Excise and its

predecessors of millions of pounds in lost revenue. The manner in which contraband was brought ashore varied but there have been persistent rumours of secret tunnels running beneath the city, such as between the River Usk and Christchurch and from the River Ebbw to St Woolos Cathedral.

The earliest reports of the illegal trade around Newport possibly date back to 1649 when 2,000 lbs of tobacco were seized at Redwick. Attempts by customs officers to board moored vessels suspected of smuggling were often less than plain sailing. During one such episode in 1791, a ship's crew, brandishing both cutlass and pistol, swore to the official that "if he presumed to come on board, they would blow his brains out!" Many merchant seamen who were found guilty of smuggling were later pressganged into the Royal Navy as a punishment and a deterrent. From 1830, it was generally recognised that smuggling was in decline nationwide, although Newport did not see a similar change in the tide. Instead, it reported increasing numbers of offences and it has been suggested that the opening of the Monmouthshire Brecon Canal may have contributed to the rise.

One interesting case involved the inaptly named ship, *Good Intent*.

Owned by a group of Newport businessmen, the 72-ton schooner ran a seemingly respectable operation between Britain and France. However, an inspection in 1837 revealed a series of false bulkheads that concealed 1100 gallons of brandy in 259 kegs. As a result, the *Good Intent*'s master was sentenced to a stint in Monmouth Gaol, whilst the vessel itself was confiscated and broken up.

On another occasion in 1891, the *South Wales Echo* reported that the master of a German ship named the *Leocadia* had been summoned to Newport Town Hall following the discovery of undeclared brandy stowed beneath some canvas in his bath. The steward had claimed the barrel was empty but the truth was revealed when customs officers heard the liquid sloshing about inside. That same year, the *Western Mail* printed a story about a runner for a Newport butchers, who was charged with smuggling cigars. Upon being confronted when bringing them ashore, the man literally did a runner, although he was apprehended some two hours later. The sentence was one month's imprisonment with a two guinea fine and no doubt, his dreams of becoming a big time smuggler went up in smoke at the same time!



# This is Sarah. She's busy cleaning her oven...



Sarah called the domestic oven cleaning specialists, so she could relax and enjoy a coffee while it's done!



• Ovens • Agas • Grills • Hobs • Extractors • BBQs • Microwaves •

**CALL TODAY**

Newport & East Wales

**02920 990 287 or 01291 427 244**

[www.thecleanoven.co.uk](http://www.thecleanoven.co.uk)



**Put the sparkle back into Your kitchen today!**

**Clever Sarah!**

## UP TO 50% LESS THAN A NEW FULLY FITTED KITCHEN

by simply replacing the doors and worktops

Est. 1999

From the UK's #1  
Kitchen makeover experts.  
Visit our showroom now

**Before**



- FROM SIMPLE DOOR REPLACEMENTS TO COMPLETE FITTED KITCHENS
- FULLY INSTALLED BY LOCAL PROFESSIONALS IN JUST A FEW DAYS
- CHOOSE FROM A LARGE SELECTION OF DOORS, WORKTOPS AND APPLIANCES
- 84 SHOWROOMS NATIONWIDE

9.7/10 **Checkatrade.com**  
Where reputation matters

See what our customers have to say



CALL US NOW FOR A FREE ESTIMATE:

**01633 526077**



VISIT OUR SHOWROOM:

163 Caerleon Road,  
Newport, NP19 7FX

**DREAM DOORS®**

NEW LIFE FOR OLD KITCHENS

[www.dreamdoors.co.uk](http://www.dreamdoors.co.uk)

# Bluebird Care

Providing Support When You Need It



**We provide high quality care and support services throughout Newport & South Monmouthshire, enabling our customers to retain their independence whilst living in the comfort of their own homes.**

## **Why choose Bluebird Care**

It might be the first time that you have had to consider care for yourself or a member of your family; or perhaps you are looking for some extra support to complement the care you already receive. Whatever your situation, deciding on a suitable care company can be a stressful and difficult task, filled with uncertainty and pressure to make the right choice.

Unlike other companies, we do not take a 'one size fits all' approach to providing care. Instead, we are passionate about delivering a personalised service designed around the needs of each individual customer to support their lifestyle.

## **Our staff**

We recruit and train all of our own staff to the highest standards to ensure we provide the quality of care that we would want for our own family and friends.

Connect with us on Facebook  **Bluebird Care Newport & South Monmouthshire**  
Follow us on Twitter  **@BluebirdNewport**

## Our Services

You might be looking for short-term help and support after a stay in hospital, or whilst recovering from an illness. Or perhaps you need care and support for the long term. It might be respite that you need whilst your usual carer takes a break, or maybe you need someone to take care of a family member whilst you're away. Whatever your needs, Bluebird Care can help.

From 30-minute visits aimed at helping with household tasks or preparing a meal; to caring for those living with dementia – Bluebird Care provides you with the support you need, when you need it most.

## Some of the tasks that our Home Care Assistants frequently undertake include:

- Full personal care including showering and bathing
- Mobility assistance, including the use of hoists and other equipment
- Assisting with medication
- Assisting with managing the home, e.g. cooking, cleaning, laundry
- Help with shopping and meeting friends
- Providing support and assistance to customers attending GP/hospital/dental appointments

## A realistic and affordable alternative to Residential Care

### We also provide 24 hour Care

Our dedicated live-in carers provide personal assistance from waking until bedtime and are on hand if they are required during the night.

Should you need care and support around the clock, we will put together a small team to provide care on an hourly basis, day and night, for total peace of mind.



**Call and speak to a member of our team to find out how Bluebird Care can help you and your family.**



# Dying to Get Up Twmbarlwm

Photo: Terry C. Evans



Photo: Ann Woosnam

**I know this is going to be a sensitive subject and many out there will castigate me for these views – but ask yourself, would your dearly departed really want his or her favourite location treated in this way?**

I am, of course, talking about the increasingly common practice of displaying floral tributes and other memorabilia in public places. You see a lot of this on local beauty spots and Twmbarlwm is no exception.

I have no problem at all with the occasional bunch of flowers which are going to rot down to nothing – but when it's a six foot long wreath spelling out "Grandad" I start to question the sentiment.

Some of these wreaths are works of art and one has to admire the skills of the florist who created them and when they are displayed on that emotion-sapping day of the dearly departed's funeral they look splendid atop the casket – there's no finer indication of the family's love for their beloved relation.

Later, the family decide they need to mark the loss of their loved one in one last commemoration by displaying the wonderful, expensive, floral tributes in the place he/she loved the most. Never mind that it's everybody else's favourite place too. But that doesn't matter because the flowers will rot away naturally and be returned to the earth's bounty in the same symbolic way of the one who is now pushing up the daisies.

But wait a minute – how has the talented florist managed to sculpt the flowers into a meaningful symbol of the expired person's life? As one who has cleared away much of this type of detritus I can tell you – there is half a mile of 16 gauge wire, several kilos of phenolic foam, a ton of plastic and enough polyester ribbon to encircle around the world – none of which is going to melt into the environment any time soon.

Bearing that in mind, I believe that if the site of the tribute was truly the favourite spot of the one who is now at peace, I strongly suspect he/she is considering moving on to a less cluttered location to spend eternity.

As if the floral tributes weren't enough to irk my

*After only two weeks the beautiful floral tributes are reduced to just so much plastic, ribbon and metal.*

ire, don't get me started on balloons, inflated with hydrogen and released in their hundreds to interfere with air-traffic control and land miles away across the country where they can be potentially gobbled up by all sorts of wildlife and farm animals.

To top it all, the distribution of such tributes is often preceded by the bizarre practice of scattering poor old Grandma or Grandad to the four winds.

Now I must admit, I don't object to that too much – indeed, I also intend having the lead role in such a ceremony one day (in the distant future). Hopefully, those that I leave behind to perform the ceremony will have the sense not to leave me in an untidy pile where visitors to the site are going to want to sit with their egg sandwiches and thermos of tea. I also hope that they check the direction of the wind – I don't fancy being inhaled by my grieving family or faithful hound.

Although this article takes a light hearted view at this subject there is a real message – the passing of somebody close to you is a traumatic, personal time and we in the Twmbarlwm Society who tend the landscape for the sake of the community do not want to impinge on anyone's time of grief. However, please do not be offended when your well-meant tributes are removed after a suitable period – or why not retrieve them yourself before they're past their best?

*Terry C. Evans, Chairman CTS*

**CTS meet at the car park** below Twmbarlwm's summit for a litter pick and volunteer workday on the last Sunday of every month to which everyone is invited, it's not all hard work and it's a great opportunity to find your way around up there. We organise walks and other events up the mountain and at Crosskeys RFC throughout the year so watch our website and Facebook page for details.

**[www.twmbarlwm.co.uk](http://www.twmbarlwm.co.uk)**



# Fifteen Seconds to Create the Right Impression!

**Our experience has shown that most potential buyers will decide whether they have a good feeling about a house within 15 seconds of entering it!**

Whilst it would be ridiculous to suggest that this is the major contributing factor as to whether an offer is made or not, we strongly recommend that home owners looking to sell their properties take note and do what they can to present their house in its most favourable light.

We encourage our sellers to look at their own home through the eyes of a potential buyer and ask themselves what would you like to see, how would you like the house to be presented?

## **Tidy Up Before Viewings**

You would be amazed by the number of houses we show people around where the current owners have made no effort to clean the main living spaces. Plates, mugs, clothes, toys etc are left on display instead of being tidied away.

- Keep a few family pictures on display but if possible pack away your knick-knacks, ornaments and other items that some might consider as clutter. Whilst it is still your home, potential buyers want to be able to see themselves living there and constant reminders of you won't help!

- If your kitchen worktop space is limited, make it look as large as possible by putting kettles, toasters, microwaves, storage jars/containers and other items in cupboards.

You might also be interested to know that almost 95% of buyers are looking to buy a house that they can move straight in to. Even though buyers are encouraged to overlook the current furnishings and decoration of a property, ripped or marked wallpaper and stained or worn carpets can turn buyers off.

Some sellers might think that because they are moving they needed invest the time or go to the expense of replacing things like this but we strongly recommend you reconsider because what will cost you a couple of hundred pounds to do might save you thousands when it comes to negotiating the sale price.

## **Don't Forget Your Garden**

Spend a bit of time and money preparing the exterior of your home. Create the right first impression and keep the gardens and driveway well maintained, clean the facias and guttering, paint the front door if necessary and please remove the gnomes from the lawn!

## **Speak to the Experts**

We pride ourselves on our honesty and integrity. If you are unsure what you need to do to show off your house in its best light, ask us.



## **Book A Free Valuation and Let Us Help You to Sell Your House**

If you are thinking of buying, selling, renting or seeking a professional company to manage your properties, get in touch to find out how we CAN help you.

**Kingston Newell Estate Agents**, 70 Bridge Street, Newport, South Wales NP20 4AQ  
Tel: 01633 262628 Email: [sales@kingston-newell.com](mailto:sales@kingston-newell.com) [www.kingston-newell.com](http://www.kingston-newell.com)

# NEWPORT INDOOR BOWLING CENTRE

The Glebelands Bank Street Newport NP19 7HF

[www.newportibc.co.uk](http://www.newportibc.co.uk)



**OUR AIM IS TO FOSTER THE GAME OF INDOOR BOWLS AND TO CREATE AND MAINTAIN A CENTRE OF EXCELLENCE**

- New members Male/Female/Any age most welcome
- We also have disabled facilities
- Why not join one of our leagues
- Interested in playing competitive matches
- Coaching Sessions for all ages & standards  
Sunday 10am - 12pm  
1st sessions is free

**ALL FUNCTIONS  
CATERED FOR  
INCLUDING  
CORPORATE  
EVENTS**



**For further information please contact the Centre**

**Tel: 01633 264343**



JOIN US ON  
facebook

# GATERS



07585 558051 **Barbershop**

54, TREDEGAR STREET, RISCA, NP11 6BW



**Gaters Barbershop has moved to new premises**



Gaters Barbers are pleased to welcome you to our new barbershop which opened on Monday 21<sup>st</sup> March At 54 Tredegar street Risca NP11 6BW only about 80 yards from our old shop but this one offers you more luxury with a dedicated seating / waiting area which has TV and FREE WI FI so you can connect with your phones , check in and if you have kids they can play on their ipads to keep them entertained also. We look forward to seeing our old customers and look forward to seeing new ones too.

[www.gatersbarbers.com](http://www.gatersbarbers.com)



WH TOOL HIRE RISCA 01633 619129

**WH**  
TOOLHIRE



15% HIRE DISCOUNT

**GET YOUR  
DISCOUNT VOUCHER**

**Apply for it**



**[www.whtoolhire.com](http://www.whtoolhire.com)**

**WH TOOL HIRE RISCA 01633 619129**

**WH**  
**TOOLHIRE**



**Ring MARK GATER**



**Ring NICK FORBES**

**UNITS 1 - 4 PARK ROAD IND ESTATE PARK ROAD RISCA  
NP11 6PU**





Full & Partial  
Rewires



Landlord  
Certificates



Security  
Alarm Systems



PAT Testing  
Services



Fuse Board  
Changes



New Build  
Installations

NIC EIC Insurance Services  
approved electrical contractors

find us at

[www.darkelectrical.com](http://www.darkelectrical.com)  
07896 279 331

"No Job is Too Big, No Job is Too Small"  
We are equally adept working for  
commercial, industrial and domestic  
customers.

Review us on



07896 279 331 [info@darkelectrical.com](mailto:info@darkelectrical.com)  
14 Priory Way, Langstone, Newport, NP18 2JE

follow us at





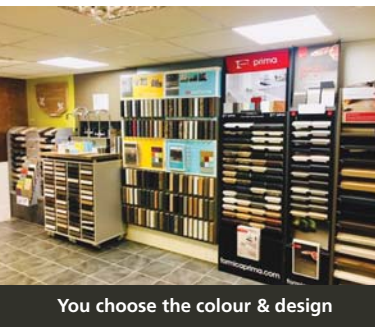
Picture shows Tristone Iris Worktops with integrated solid surface sink recently fabricated and installed by WT Laminates

## We supply, fabricate and Install

### SPECIALISTS IN WORKTOPS AND PANELING

- We have a large showroom with a massive selection on display
- Remember to bring approximate sizes for an accurate no obligation quotation
  - Most can be ordered for next day delivery to any location
  - Fitting and fabrication services available

**PLEASE VISIT OUR WEBSITE FOR MORE INFORMATION OR QUOTATION BY EMAIL**



You choose the colour & design



We then template and cut to size...



...and then achieve the perfect finish



Units 10-12 Newport Business Centre, Corporation Road, Newport NP19 4RF  
**01633 251908** [info@wtlaminates.co.uk](mailto:info@wtlaminates.co.uk) [www.wtlaminates.co.uk](http://www.wtlaminates.co.uk)

#### Opening Times

Mon - Thurs 8am - 5pm, Fri 8am - 4.30pm  
 Also Open Saturdays 9am - 1pm

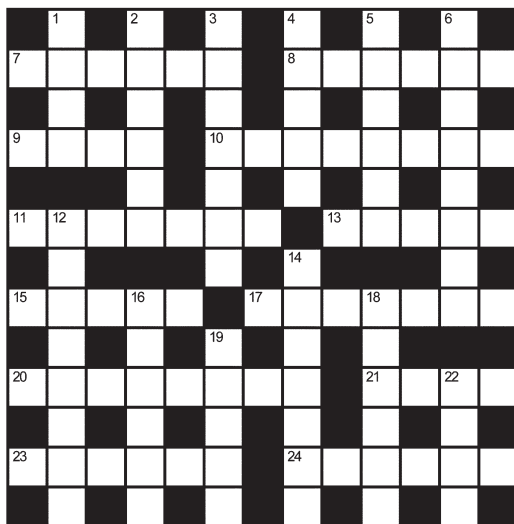
# Crossword

## Across

- 7 Wait upon (6)
- 8 Educated (6)
- 9 Leave out (4)
- 10 Buy (8)
- 11 Rebuked (7)
- 13 Cost (5)
- 15 Areas within a house (5)
- 17 Covered with thorns (7)
- 20 Against the current (8)
- 21 Curve on bottom of foot (4)
- 23 Edible bulbs (6)
- 24 Employ (6)

## Down

- 1 Very small particle (4)
- 2 Relating to the teeth (6)
- 3 Modified (7)
- 4 Celestial bodies (5)
- 5 Writer (6)
- 6 Involving the body (8)
- 12 Cutting with an axe (8)
- 14 Metal wind instrument (7)



- 16 Technique (6)
- 18 Alter (6)
- 19 Sound practical judgment (5)
- 22 Wire enclosure used for birds (4)

# Sudoku

1	3	4	2		9		8	
				1			4	3
7	6	8	3				9	
3				9				
4						5		
		9	1				7	
	4	6	5	7				
5					4		2	
8	1	3		2				

The object of sudoku is to insert the missing numbers in the boxes to satisfy just one condition: each row, column and 3x3 box must contain the digits 1 through to 9 exactly once. This can be done by applying logic – you do not have to guess.

Solution on page 32



# Leaky Shower???

## We have a Shower Pod Solution



**SALE  
NOW  
ON**

### Are you fed up with your leaking shower area?

Install a leak free replacement from  
Newport Bathroom Centre.

We have a special offer for a 900mm Quad  
2 door shower door, with a thermo shower  
mixer and leak free shower pod.

Supplied and fitted from  
**£1595.00 inc Vat**  
(Full terms apply)

- Quick Installation
- Minimum disruption
- Completely leak free construction
- Say goodbye to silicone and grout
- No mould or bacteria
- Easy to clean

We also offer a full design service using the latest  
3D Software to visualise designs.  
Supply Only OR Supply and Professional Installation.  
Tiles, bathrooms, furniture, accessories, showers  
and much, much more.



## Newport Bathroom Centre Ltd

Based @ George Street Furnishers 19-24 George Street, Newport. NP20 1EN

**Tel: 01633 26 26 29**

[info@newportbathroomcentre.com](mailto:info@newportbathroomcentre.com)

# What's On



See our website for a full list of what's on locally.

[www.swdirectories.com](http://www.swdirectories.com)

# Places of Worship



See our website for a full list of local church services and activities.

[www.swdirectories.com](http://www.swdirectories.com)

## Learn FREE Raja Yoga Meditation

with the Brahma Kumaris Newport  
For information please contact Rupdaye:



[newport@uk.brahmakumaris.org](mailto:newport@uk.brahmakumaris.org)  
07908 221731

## Aviation and Air Traffic Control Established 1987

If you are interested in aviation and would like to know more about what goes on in the air above us every day, why not come along to one of our regular meetings at the Graig Community Hall, Bassaleg?  
For more information call  
01633 213243

# Yoga Classes

## Introduction/Beginners Class Every Monday

5.45pm - 6.45pm - Malpas Community Centre,  
Pillmawr Road, Newport NP20 6WF

## General Class (Iyengar) Every Monday

7.00pm - 8.30pm - Malpas Community Centre

## General Class (Iyengar) Every Tuesday

Swansea University, Digital Technium, Singleton Park  
SA2 8PP

## General Class (Iyengar) Every Wednesday

7.00pm - 8.30pm - Cardiff International Sports  
Centre, Leckwith Road, Leckwith, Cardiff CF11 8AZ  
Remedial / Sports Massage Therapies Available

For more information contact

**Chris Robins**

Iyengar Yoga Teacher  
Remedial/Sport Massage Therapist

**07979 500 212**

email: [chris@awesomemeyoga.co.uk](mailto:chris@awesomemeyoga.co.uk)

[www.awesomemeyoga.co.uk](http://www.awesomemeyoga.co.uk)

The art of Yoga & Massage



# DiABETES UK

DEALL DIABETES. BRWYDRO DIABETES.  
KNOW DIABETES. FIGHT DIABETES.

## Cwmbran Diabetes UK Group

Supporting people with diabetes in Cwmbran and the surrounding area.

We welcome anyone affected by diabetes, whether newly diagnosed or longer term, along with carers, friends and visitors.

**Our meetings and occasional trips take place on the 2<sup>nd</sup> Wednesday of the month at 7.30pm.**

**CWMBRAN R.A.F.A. CLUB, GREENHILL ROAD, FORGE HAMMER, CWMBRAN, NP44 3DQ**

**Cwmbran group contact - Mrs Val Carnegie**

**T: 01633 872553 E: [slasher45@btinternet.com](mailto:slasher45@btinternet.com)**

**Further info on Diabetes contact - Diabetes UK Cymru**

**T: 029 2066 8276 E: [wales@diabetes.org.uk](mailto:wales@diabetes.org.uk)**

## Blaen-y-Pant Centre

Kimberley Park, Malpas, NP20 5QB

### Bingo & Lunch club

**Tuesday** 1.00pm Contact: 01633 263031

### Whist club

**Tuesday** 6.30pm & Saturday 6.30pm  
Contact: 01633 853348

### Art Classes

**Monday** Art Group 11:00am -1.00pm  
Life Drawing 4.45pm-6.45pm  
Adult Art Class 7.00pm-9.00pm

**Wednesday** Adult Art Class  
11.00am-1.00pm & 2.00pm-4.00pm

**Saturday** Children's Art class  
11.00am-1.00pm & 2.00pm-4.00pm  
Please contact: 07772 064424

### Art Group

Life drawings 2nd & 4th **Sunday**  
White Hart Caerleon  
Please contact: 07772 064424

## Newport U3A

Would you like to travel, get creative, play the Ukulele, join a choir, attend talks and video shows, get active or learn a new language - all for pleasure, with NO exams? Well Newport U3A has over thirty interest groups for the retired or those winding down to retirement. We meet at the premises of Shaftesbury Street Methodist Church, NP20 5JH from 10.00am to 3.45pm Wednesdays, Thursdays and Fridays during term time, and other days for offsite activities.



The New Term starts on Wednesday 4th September. Come along and try a few taster sessions before committing to join us. We would love to see you at anytime of the year.

For more information about Newport U3A's many interest groups and events visit [www.newportu3a.org.uk](http://www.newportu3a.org.uk) or phone Angela Robins on 07980 970967.



## Dementia Café

Dementia can strike anyone at any age with any degree of severity, it affects not only those with the illness but also the carers. To help them and give some respite to the carers, St Mary's Church, Malpas has opened a dementia friendly café. It meets every 2nd Monday of the month in the new Cloister Room adjoining the church. Everything is free.

There is free tea, coffee, biscuits, cake, jigsaws, songs, textured cloths, painting, people to listen, people to talk to. The café is open

10am to 12 noon. Come along and spend a while among friends, you will be made more than welcome. There is good

wheelchair access, a disabled toilet and parking is either outside the church in the bay on the main road or in Llanover Close around the corner.

The dates for the rest of the year are - 9th Sept, 14th Oct, 11th Nov & 9th Dec. For more information contact Maggie Thomas 07825 914095



## S.CLODE FELT ROOFING

LOCAL ROOFER

- Competitive Rates
- No Job Too Small
- UPVC Fascia & Guttering Repaired & Cleaned



Call Stephen on:

01633 300913

07778 496385

PLUMBING & HEATING SERVICES

# R Howells

- Central Heating Systems • New Boiler Installations
- Boiler Repairs, Servicing & Power Flushing
- Landlord's Certificates • Plastering • Tiling
- Domestic & Commercial Services
- Bathroom Installation • Local & Reliable Service
- Over 15 Years' Experience

**No Job Too SMALL!**

Call Ryan on 07789 996779

Email: [ryanplumbandheat@gmail.com](mailto:ryanplumbandheat@gmail.com)

[www.rhowellsplumbingandheating.co.uk](http://www.rhowellsplumbingandheating.co.uk)



Puzzle Solutions

## Puzzle Solutions

### Crossword

Across: 7 Attend, 8 Taught, 9 Omit, 10 Purchase, 11 Scolded, 13 Price, 15 Rooms, 17 Prickly, 20 Upstream, 21 Arch, 23 Onions, 24 Engage.

Down: 1 Atom, 2 Dental, 3 Adapted, 4 Stars, 5 Author, 6 Physical, 12 Chopping, 14 Trumpet, 16 Method, 18 Change, 19 Sense, 22 Cage.

### Sudoku

1	3	4	2	6	9	7	8	5
9	2	5	7	1	8	6	4	3
7	6	8	3	4	5	2	9	1
3	5	1	4	9	7	8	6	2
4	7	2	6	8	3	5	1	9
6	8	9	1	5	2	3	7	4
2	4	6	5	7	1	9	3	8
5	9	7	8	3	4	1	2	6
8	1	3	9	2	6	4	5	7

## R J PHILLIPS INTERIORS

CURTAINS—BLINDS—SOFT FURNISHINGS—TRACKS AND POLES



NEW SHOWROOM



### CUSTOM MADE SOFT FURNISHINGS, DESIGN AND FIT

- Wide range of fabrics
- Alterations
- No job too big, or too small.
- Use of own fabric acceptable
- Quality, expert service at affordable prices

FREE quotation, measure and design service

[www.rjphillipsinteriors.co.uk](http://www.rjphillipsinteriors.co.uk)

Tel : 01633 267753 Mob: 07906 040417

[enquiries@rjphillipsinteriors.co.uk](mailto:enquiries@rjphillipsinteriors.co.uk)

59 Church Road, Newport, NP19 7EJ

## This months Hot Properties

**FOR SALE**



**£720,000**

### Malpas Road, Newport

Stunning 5 bedroom detached Period farm house. Idyllically set within approx 1.5 acres.

**FOR SALE**



**£379,950**

### Woodlands Drive, Malpas

Stunning 4 bedroom detached new build property finished to high specification.

**FOR SALE**



**£330,000**

### Canberra Crescent, Newport

Immaculately presented 3 bedroom detached bungalow within ideal setting.

**FOR SALE**



**£295,000**

### Gwenddwr Grange Close, Newport

Beautifully presented 4 bedroom detached family home. Driveway parking for two vehicles & single garage.

*All properties available at time of going press*

# Kingston Newell

ESTATE AGENTS



**OUR  
GUARANTEE**  
WE WILL  
MATCH ANY  
OF OUR  
COMPETITORS  
FEES\*

## Key to *your* move...

Kingston Newell is one of the leading independent estate agents in Newport with more than 30 years experience. We pride ourselves on the level of service we offer to our clients.

- No sale - no fee
- Residential or commercial sales and lettings
- Internet promotion to 1000's of prospective buyers
- Call us for a free, no obligation valuation or property appraisal

Call us **today** on

# 01633 26 26 28

70 Bridge Street, Newport, South Wales NP20 4AQ

[www.kingston-newell.com](http://www.kingston-newell.com)



British  
Gymnastics  
More than a sport

## WE HAVE MOVED OUR WEEKDAY CLASSES TO AN EXCITING NEW VENUE WITH SPRUNG FLOOR

Unit 4 Wern Industrial Estate, Rogerstone, NP10 9FQ  
(nr Tiny Rebel Brewery and Ballet Cymru)

### GYMNASTICS AND CHEERLEADING

#### Pre-School Classes

- Parent and child gymnastics for under 2s and 2-4yrs.  
British Gymnastics themed badge & certificate for all.
- Independent gymnastics and cheerleading for 3-4 yrs.
- Offering fun, excitement and challenges in a caring environment.
- Brightly coloured, age appropriate equipment.

#### School Age Classes

- Gymnastics for children from reception - year 8.
- Cheerleading for children from reception - year 6.

**FREE TRIAL FOR ALL NEW  
PRE-SCHOOLERS**



[www.hohgymnastics.co.uk](http://www.hohgymnastics.co.uk) | [info@hohgymnastics.co.uk](mailto:info@hohgymnastics.co.uk)  
07768 485892





# GYMNASTICS AND CHEERLEADING CLASS TIMETABLE SEPTEMBER 2019 - JULY 2020

MON	TUE	WED	THU	FRI	SAT
All Weekday classes are held at Unit4 Wern Industrial Estate Rogerstone NP10 9FQ	9.15-10.00 Parent/Child 2-4yrs	9.15-10.00 Parent/Child 2-4yrs	9.30-10.15 Parent/Child 2-4yrs	9.30-10.15 Parent/Child 2-4yrs	9.30-10.15 Cheerleading Rec-Yr6
	10.15-11.00 Independent 3-4yrs*	10.15-11.00 Under 2yrs	10.30-11.15 Independent 3-4yrs*	10.30-11.15 Independent 3-4yrs*	10.15-11.00 Yr3-Yr6
	11.15-12.00 Parent/Child 2-4yrs	11.15-12.00 Parent/Child 2-4yrs	11.30-12.15 Parent/Child 2-4yrs	11.30-12.15 Under 2yrs	11.00-11.45 Rec-Yr2
	12.30-1.15 Independent 3-4yrs*	12.30-1.15 Parent/Child 2-4yrs	12.45-1.30 Independent 3-4yrs*	12.45-1.30 Independent 3-4yrs*	11.45-12.30 Rec-Yr2
	1.30-2.15 Independent 3-4yrs*	1.30-2.15 Independent 3-4yrs*	1.45-2.30 Parent/Child 2-4yrs	1.45-2.30 Parent/Child 2-4yrs	1.00-1.45 Independent 3-4yrs*
	2.15-3.00 Independent 3-4yrs gym/cheerleading	2.15-3.00 Independent 3-4yrs gym/cheerleading			1.45-2.30 Parent/Child 2-4yrs
3.45-4.30 Rec-Yr2	3.45-4.30 Rec-Yr2	3.45-4.30 Rec-Yr2	3.45-4.30 Rec-Yr2	3.45-4.30 Rec-Yr2	
4.30-5.15 Rec-Yr2	4.30-5.15 Rec-Yr2	4.30-5.15 Rec-Yr2	4.30-5.15 Rec-Yr2	4.30-5.15 Rec-Yr2	
5.15-6.00 Yr3-Yr6		5.15-6.00 Yr3-Yr6		5.15-6.00 Advanced Yr4-Yr8	
				6.00-6.45 Tumbling Yr4-Yr8	



[www.hohgymnastics.co.uk](http://www.hohgymnastics.co.uk)  
07768 485892

## Term Dates:

04.09.19 - 26.10.19  
4.11.19 - 21.12.19  
6.1.20 - 15.2.20  
24.2.20 - 4.4.20  
20.4.20 - 23.5.20  
1.6.20 - 18.7.20

PRE-SCHOOL
Parent/child gymnastics 7mths - 2yrs
Parent/child gymnastics 2-4yrs
Independent gymnastics 3-4yrs *dob: 01.09.15-31.08.16
SCHOOL AGE
Gymnastics: Reception - Yr8
Cheerleading: Reception - Yr6

**All weekday classes are held at:**  
Unit 4 Wern Industrial Estate  
Rogerstone NP10 9FQ

**All Saturday classes are held at:**  
Trinity Church Sports Hall,  
Glasllwch Lane Newport NP20 3PU

## Of Ducklings and Gulls

Those of our readers who have been with us for any length of time will know it's not only swans which need our help, but it is true that by far the majority of our rescues do involve 'water' birds in the broadest sense. This time, its ducklings (mallard) and gulls (Lesser Black Backed); the two stories are not related.

We received a family of eight tiny day old ducklings, their catastrophic separation from mother duck in a totally regrettable incident involving a speeding motorist on the outskirts of Cardiff. We have years of experience in dealing with these tiny creatures; at some stage this always involves moving them on for 'finishing' prior to release, due to limited capacity this might be sooner rather than later. And so it was with this group. A characteristic which marks some mallard families is they are incredible 'athletes', capable of jumping considerable heights from a standing start; doubtless a very useful attribute in their survival kit! So we loaded the ducklings into what we considered a suitable box and set off for Vale Wildlife Rescue at Beckford. Horror of horrors, when we arrived and booked the birds in, we found we had only six ducklings. Despite emptying the back of the car we could find no trace of the two missing ducklings and neither could we hear them, we would have expected their characteristic high pitched contact calls to have been apparent. There was nothing, so we set off for home. Stuck in traffic at some point during the return journey we did hear that call, and eventually found two little ducklings in one of my wellington boots. Clearly, they had jumped from the bottom of the box, locating one of the



The discovery was made at about 5am by members of the workforce. They had to find a certain amount of sophisticated kit in order to remove them from their predicament, whereupon we were



carrying slots and transferred themselves to the boot. So, for these two, the whole process had to be repeated, for which, it seems, they were none the worse.

A local food manufacturing /processing company has learnt how careful they have to be regarding the management of open topped road-going containers, by ensuring they are fully covered when they are not in use. One such recently emptied container (but not washed and cleaned because its use is for unwanted leftovers) was found by four adult gulls at some time during the night, and clearly was thought to contain some tasty food items. Whether it did or didn't, the actual residue was in fact a curry sauce colour; let's say turmeric yellow!



called to arrange transport, care and rehabilitation. In fact we were in a near identical situation three years ago, and so had no hesitation in, once again, involving Vale Wildlife Rescue. The gulls are recovering well. By an odd coincidence, on 6th July, The Times carried a picture of a Herring Gull which had met with a similar misfortune some 100 miles or so away, and was cleaned by the staff at another local wildlife hospital.

**For swan and all other wildlife problems please contact Peter & Ellen on 01633 895241 or 07802 472788**



# MOORLAND MAYFAIR

## WEALTH MANAGEMENT

Are your Pensions & Investments due a health check?

Are you worried you're not going to have enough to live off in retirement?

Want to protect you and your loved ones in the event of loss of income, serious ill health, or worse?

Are you planning to save for a major purchase? Or just want to make your money work a little harder?

**Speak to your local financial advisers and book your free initial consultation – We can even come to visit you.**

No obligation & no pushy sales. Just simple, clear & trustworthy advice.

**Quote SW Directories for your free financial plan and cash flow forecast**

## Contact us

### Head Office

01633 415353

Excalibur House, Newport, NP18 2HJ

[email@moorlandmayfair.com](mailto:email@moorlandmayfair.com)

[www.moorlandmayfair.com](http://www.moorlandmayfair.com)



**Cardiff • Newport • Cheltenham • Bath • Oxford • Reading**

Moorland Mayfair Wealth Management are authorised and regulated by the Financial Conduct Authority FRN: 748339. Registered office address: Excalibur House, Newport, NP18 2HJ





# THE ULTIMATE GARDEN FENCE

## Safe, Secure & very, very strong...



### COLOURFENCE ARE TRANSFORMING GARDENS ACROSS NEWPORT, CWMBRAN, CAERLEON, PONTYPOOL & MONMOUTHSHIRE

It may do "exactly what it says on the tin" but let's face it, treating a timber fence can never be called fun! In fact, owning a timber fence isn't much fun either with costly, time consuming maintenance and repairs almost every year.

Finally, the alternative to timber fencing... our fence goes up and stays up, resisting gusts of up to 130mph!

ColourFence fencing solutions are made from innovative Colorbond steel, virtually maintenance free with an occasional wash down with water to keep it looking as good as new - so you never need to pick up that paintbrush again! **Guaranteed not to rot, warp, chip or peel for 25 years.**

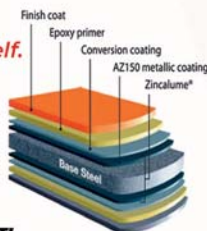
Available in a variety of heights and colours with or without trellis, our skilled installation team will make short work of transforming your garden.

The best news is the pricing is just as attractive, starting costs are in line with comparable systems but offer the ongoing peace of mind. Your investment will continue to save time and money year after year.

**For those of us who want a low maintenance garden, ColourFence promises a life time of hassle-free enjoyment.**

### The Fence that repairs itself.

If you scratch or cut ColourFence, the ingenious zinc element in the Zinalume steel reacts with moisture to form a protective barrier to prevent any corrosion with no action needed from you.



**STRONG, SECURE & BUILT TO LAST!**

### The only fence that won't

✓warp ✓crack ✓shrink ✓rot ✓peel ✓break ✓blow over

**...Well for 25 years\*, at least!**



For a **free** no-obligation site visit, please call **Chris & Karen** on

**Tel: 01633 211860 | [www.colourfence.co.uk](http://www.colourfence.co.uk)**





Outstanding quality,  
unbeatable value  
and guaranteed to be  
maintenance free!

A truly top end  
product, at a truly  
affordable  
price.



Choosing your railings always used to be a trade-off between price and quality. The impressive appearance that beautifully designed railings give to a property would usually come with an equally impressive price.

## ColourRail in detail...

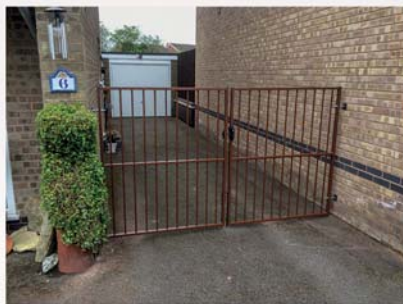
- High quality galvanised steel with architectural grade powder coated finish.
- Choice of five standard colours and 300 RAL colours at an additional charge.
- Standard sizes or made to measure.
- 10-year maintenance-free guarantee† against corrosion and peeling.
- Supply and fit service if required with no-nonsense 'ALL-IN' pricing with NO hidden extras, NO obligation and NO pressure promise.

ColourRail has shaken up this very traditional market. Not only does ColourRail offer a **truly top end product, but they are able to do so at a truly affordable**. What's more, because of the specialised process they use to powder coat their galvanised steel components, we are more than happy to **guarantee† them against corrosion for a full 10 years**.

For the next 10 years you need never pick up a brush, repaint or indeed worry about the condition of your railings. In contrast ColourRail railings require just an occasional wash down to keep them looking as bright and as impressive as when they were installed. And you will have also saved a good deal of expense.

From a single side gate, to driveway gates, to a decorative border, to a feature front garden, between existing pillars, or freestanding no job is too big or small.

**You can choose from a selection of colours, a range of heights and from an array of Loop, Spear & Flat tops to complete the look.**



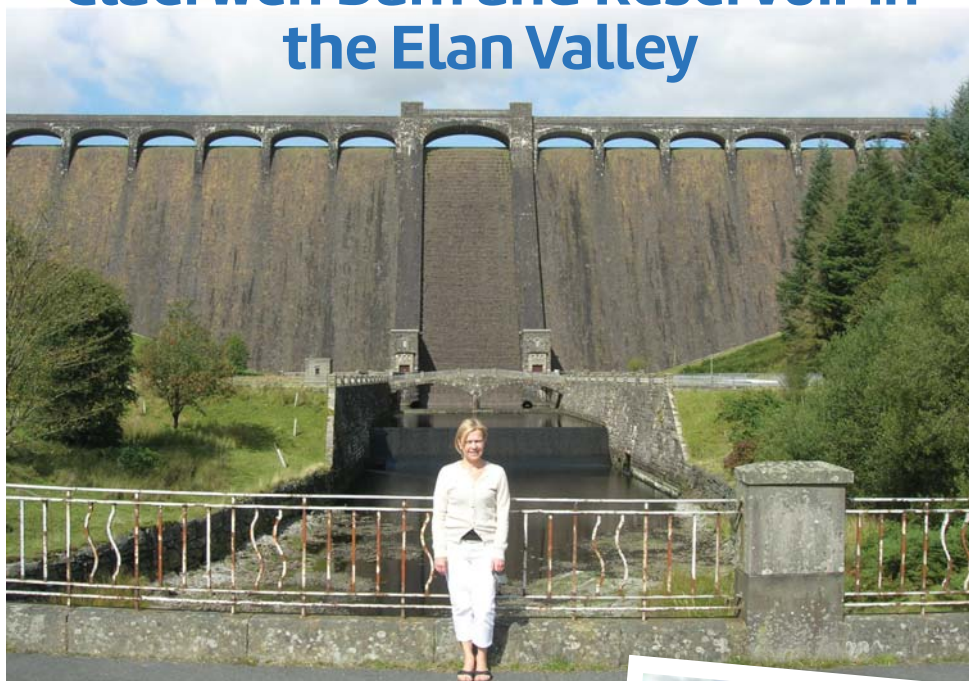
MADE IN BRITAIN  
Checkatrade.com  
Where reputation matters

To discover more about how ColourRail can transform your property don't delay -  
call us today on: 01633 211860

and let us demonstrate how thanks to ColourRail beautiful gates and railings are now more affordable than ever.

\* full terms & conditions available online

## Claerwen Dam and Reservoir in the Elan Valley



The severe drought of 1937 served to give warning of the increasing need for much greater water storage capacity. Proposals for a large new dam in the upper Claerwen Valley were at an advanced stage by early 1939, but the Second World War meant that the demands of wartime production itself put even greater strains on the existing water supplies. The increasingly urgent calls for a new dam and reservoir on the Claerwen were to be reactivated soon after the end of the war.

It is a measure of its size that the Claerwen dam was to create a reservoir which holds almost as much water as the

combined total of the three earlier dams built in the neighbouring Elan Valley. The dam is 184ft (56m) high and 1167ft (355m) long.



The Claerwen dam was designed to be in keeping with the appearance of the much older structures nearby. Although built in concrete, the



huge dam was faced with dressed stone. The construction of the Claerwen dam, the last of the dams in the district, took six years, using a workforce of 470. The Claerwen dam was ceremonially declared open by the newly crowned Queen Elizabeth in October 1952, in one of the first official engagements of her reign.





**Live well, your way**  
with care at home

**Your home** is where you feel the most comfortable  
and the happiest.

It's the place you know the best. Why would you move away from the place you love if you are faced with needing some extra care and support when you age? If you want to stay living comfortably at home, we can help you make that choice an informed one.



Contact us for more **information**

*Locally owned, family run*

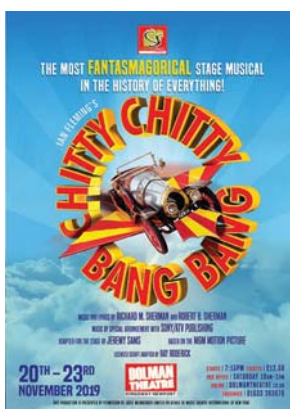
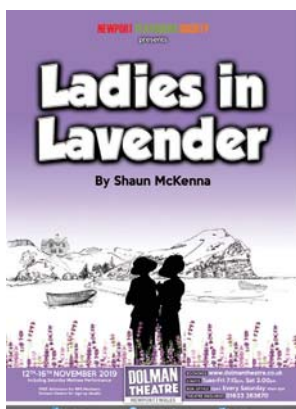
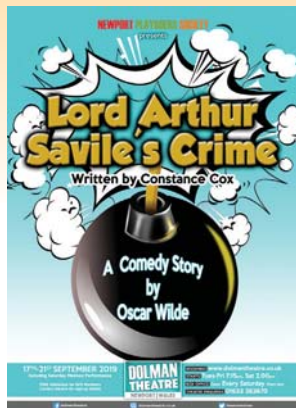
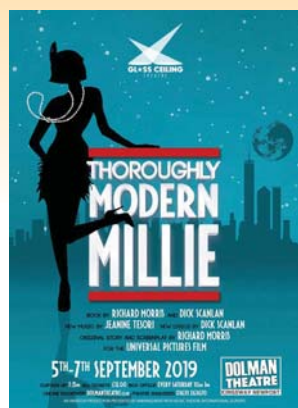
**Home Instead Newport**

4 St. John Crescent, Rogerstone  
Newport, NP10 9EY

Telephone: **01633 740028**

**[www.homeinstead.co.uk/  
newportcaerleonandcwmbbran](http://www.homeinstead.co.uk/newportcaerleonandcwmbbran)**

# DOLMAN THEATRE NEWPORT



**Booking: [www.dolmantheatre.co.uk](http://www.dolmantheatre.co.uk)**  
**Theatre Enquiries: 01633 263670**

# Caerleon ANTIQUES & SOCIAL HISTORY CLUB 2019-20

Caerleon Social History Club takes place in Caerleon Town Hall on the 2nd and 4th Tuesday evening of the month, apart from the event in October, which is on Tuesday 1st. Our first evening of the season is on September 10th and begins at 7.15 p.m.

Everyone will have the opportunity to listen to a variety of speakers on a wide range of subjects. Membership for the year (September – April) is £25 but it is possible for anyone to join us for an individual evening too. You will be made very welcome.

Refreshments are available and the evening finishes at 9.00pm

**Should you have any queries please do not hesitate to contact:**  
**Maggie Bain - Chairperson Tel 07714 008796**

## Programme Sept-Oct 2019

### September 10th

**Saving Treasures, Telling Stories** – Dr Rhianydd Biebrach, National Museum of Wales. A Heritage Lottery Grant Funded Project – acquiring archaeological objects for local and national collections. An interesting evening to start our year!!

### September 24th

**The Auction Market Today plus questions and valuations** - Caroline Hawley, a regular on Flog It and Bargain Hunt. Caroline has dealt in antiques and collectables since a teenager.

### October 1st

**Please note date as it's the 1st Tuesday of the month**  
**The Living Levels** - Gavin Jones, Community Engagement Officer. The heritage, wildlife and wild beauty of the historic landscape of the Gwent Levels

### October 22nd

**The Plas Gunter Mansion, Abergavenny** – Dr Gill Wakley. A hidden chapel, illegal Catholic masses and martyrdom.

U  
L  
L  
Y  
S  
E  
S  
LTD



## THE COMPLETE BUILDING SERVICE

- New Builds
  - Extensions
  - Conversions
  - Restorations
  - Renovations
  - Kitchens
  - Bathrooms
  - Plumbing
  - Plastering
  - Carpentry
  - Decorating
  - Tiling
  - Assistance with your building project from planning to completion
  - Excellent relations with local building inspectors
  - 30 years experience
  - Family run company with a reputation for quality
  - Directly employed, skilled tradesmen
- Insurance repairs also undertaken**  
**Suffered fire, flood, leak, impact or storm damage?**
- We are an approved contractor for many of the most well known insurance companies
- Call 01633 612444**  
**01633 213033**  
**www.ullyses.com**





IMPROVE YOUR  
CONFIDENCE › FITNESS › CO-ORDINATION  
› FOCUS › SELF DEFENCE  
... AND MAKE NEW FRIENDS  
ALL AGES AND ABILITIES WELCOME



# PONTHIR

## TAE KWON-DO

TRAINING SESSIONS HELD AT  
PONTHIR VILLAGE HALL ON TUESDAYS, THURSDAYS & SUNDAYS

CONTACT MASTER PETER JAMES  
(5TH DEGREE BLACK BELT)

T: 07738 390634

OR E: [PETERGREGORYJAMES@ME.COM](mailto:PETERGREGORYJAMES@ME.COM)

FULLY LICENSED AND INSURED  
MEMBERS OF THE TAGB AND BTC WITH OVER  
20 YEARS COACHING EXPERIENCE.  
ALL INSTRUCTORS HAVE DBS CLEARANCE





**Wade and Wade LLP are a family run legal practice offering a friendly and cost competitive legal service in areas such as:**

- The buying and selling of your home (conveyancing)
- Wills and Probate
- Lasting Powers of Attorney

We will take time to talk things through with you to understand your needs to enable our experienced team to offer no nonsense, practical advice.

We offer transparency in relation to our costs so you will always know what to budget.

**Let our family take care of your family.**



126 Caerleon Road Newport NP19 7GS  
[info@wadeandwadellp.co.uk](mailto:info@wadeandwadellp.co.uk) | [www.wadeandwadellp.co.uk](http://www.wadeandwadellp.co.uk)  
01633 386026



# DISTINCT KITCHENS



## FULL DESIGN & INSTALLATION SERVICE

[www.distinctkitchens.co.uk](http://www.distinctkitchens.co.uk)



### TRADITIONAL

Classic look and feel with the added benefit of modern functionality.



### MODERN

Clever design to create an impressive space to cook, eat and entertain.



### BESPOKE

Bespoke hand-made kitchens are exquisitely designed and made with the finest materials.

☎ 01633 619 999 ✉ [info@distinctkitchens.co.uk](mailto:info@distinctkitchens.co.uk)

🌐 [www.distinctkitchens.co.uk](http://www.distinctkitchens.co.uk) 📍 Unit 17, Pontymister Industrial Estate, Risca, NP11 6NP





# Revive your drive with Resin Drives



Combine extra parking space with stunning kerb appeal.



Give your outdoor space the 'wow' factor with landscaped pathways.



Create a unique and stylish patio area.

## Why Choose Resin?

- Completely porous and puddle free
- Hardwearing, durable and weed-adverse
- 10 times more environmentally friendly than concrete
- Slip resistant, wheelchair friendly and excellent tyre traction



## Why Choose Resindrives.co.uk?

- Highly skilled installation team
- No subcontracting
- Multiple colour schemes & styles to choose from
- Over 10 years experience

**For ultimate kerb appeal add a state of the art garage door, maintenance-free composite fencing or a realistic artificial lawn**



CALL TODAY FOR A FREE QUOTE AND SURVEY

**0800 007 5733**  
**www.resindrives.co.uk**

\*Resindrives.co.uk is a trading name of resindrives.co.uk Ltd. Authorised and regulated by the Financial Conduct Authority (FRN743675) We are a credit broker and not a lender, we offer credit facilities from a panel of lenders. Finance subject to status. Terms and conditions apply.



THE ORIGINAL RESIN CO.

## Boiler service offer...

# £45.00 + VAT\*

Professional boiler servicing with pride.

Our servicing offer includes a full system check and boiler filter clean out.

Quote  
**RDBoiler**  
when you call  
\*excludes back boiler units and powermax boilers

The logo for ecowarmth, featuring a stylized leaf icon above the company name in a sans-serif font.

[www.ecowarmth.wales](http://www.ecowarmth.wales)

Full central heating systems  
24 hr breakdowns & maintenance  
Boiler repair & installation  
Boiler and fire servicing  
Unvented cylinder installation & servicing  
Bathroom design & fit out  
Radiator installation  
Fires & surrounds  
Gas safety certificates  
General plumbing  
365 days a year helpline

Contact our family run team on

**01633 894 113**  
**01633 615 800**

